

EXHIBIT "A"

~BASIS OF BEARING~
As shown on the official BLM plat, approved March 12, 2008, referenced to the true meridian.

LEGAL DESCRIPTION EXHIBIT

SECTION 27, TOWNSHIP 11 NORTH, RANGE 27 EAST
LEFLORE AND SEQUOYAH COUNTY, STATE OF OKLAHOMA.

LEGAL DESCRIPTION:

A parcel of land situated in section 27 of township 11 north, range 27 east, Indian Meridian, LeFlore and Sequoyah County, Oklahoma, being the wet bed acres of section 27, and being more particularly described as follows:

BEGINNING at the angle point on the East boundary of section 27 on the State Line between Arkansas and Oklahoma, at the digitized 2003 left bank ordinary high-water mark, upstream along said mark in section 27;

THENCE, upstream along aforesaid mark, S. 17°20' W., 537.90 feet;

THENCE, S. 10°02' W., 196.68 feet;

THENCE, S. 41°04' W., 319.44 feet;

THENCE, S. 68°50' W., 118.80 feet;

THENCE, S. 47°37' W., 225.06 feet;

THENCE, S. 05°40' W., 149.16 feet;

THENCE, S. 30°40' W., 156.42 feet;

THENCE, S. 02°35' E., 281.16 feet;

THENCE, S. 15°42' W., 252.78 feet;

THENCE, S. 47°14' W., 198.66 feet;

THENCE, S. 28°12' W., 197.34 feet;

THENCE, S. 16°16' W., 206.58 feet;

THENCE, S. 31°15' W., 253.44 feet to the angle point of sections 27 and 34, at the digitized 2003 left bank ordinary high-water mark;

THENCE, N. 90°00' E., along the line between sections 27 and 34, 1191.30 feet to the angle point of sections 27 and 34, at the digitized 2003 right bank ordinary high-water mark, downstream along said mark;

THENCE, downstream along aforesaid mark, N. 29°52' E., 48.18 feet;

THENCE, N. 33°27' E., 366.96 feet;

THENCE, N. 42°11' E., 128.04 feet to the angle point on the East boundary of section 27 on the State Line between Arkansas and Oklahoma, at the digitized 2003 right bank ordinary high-water mark;

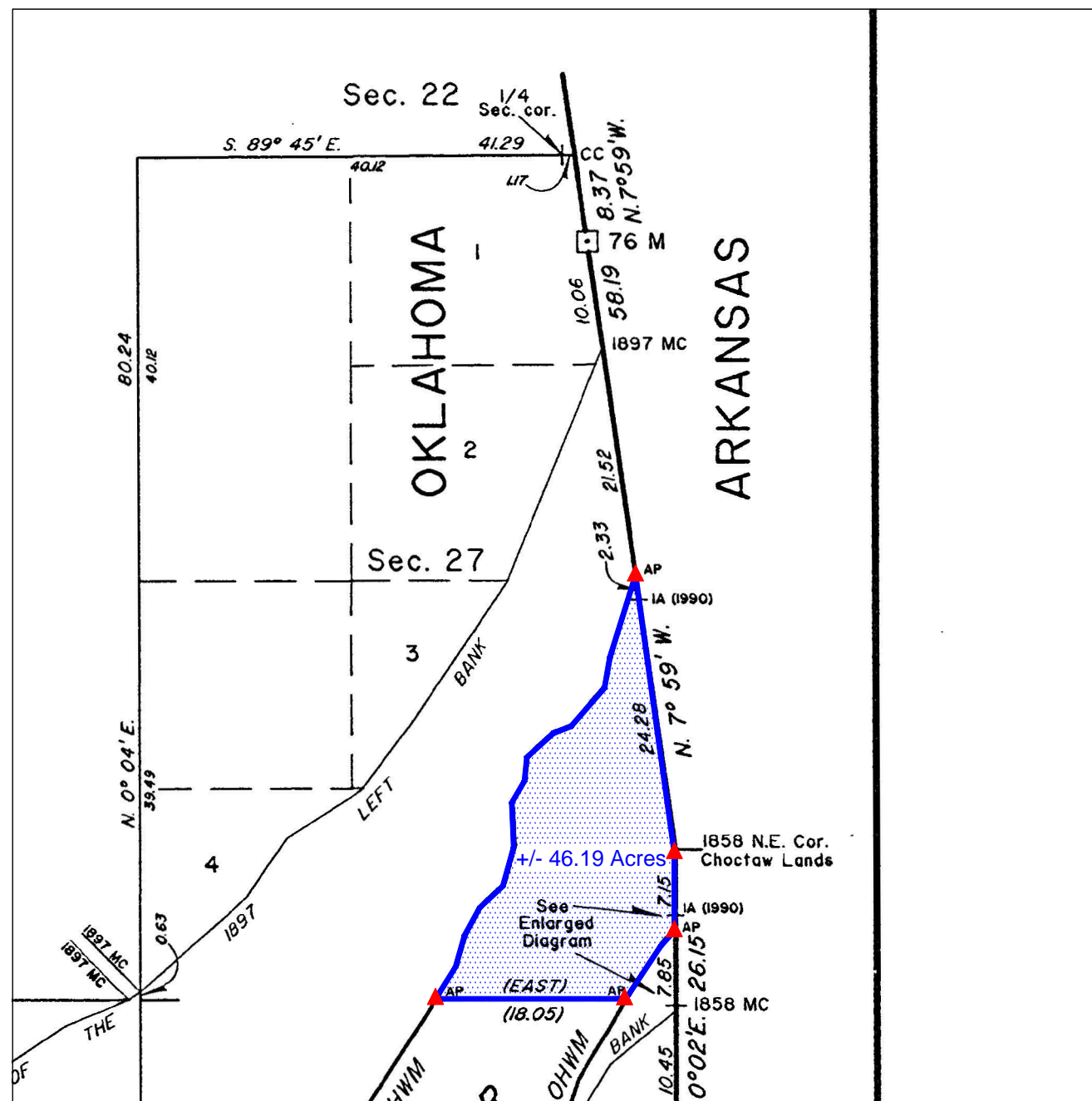
THENCE, N. 00°02' E., along the East boundary of section 27 on the State Line between Arkansas and Oklahoma, 491.17 feet to the 1858 N.E. corner of Choctaw lands;

THENCE, N. 07°59' W., along the East boundary of section 27 on the State Line between Arkansas and Oklahoma, 1756.26 feet to the **POINT OF BEGINNING**, containing +/- 46.19 acres.

BASIS OF BEARINGS: As shown on the official BLM plat, approved March 12, 2008, referenced to the true meridian.

Meaning and intending to describe the parcel derived from the Official Bureau of Land Management plats and field notes of the Dependent Resurvey and Survey of the Arkansas River Bed approved March 12, 2008. The purpose of this description is to describe the wet bed areas as shown on the plat. This is exclusively for use by the Arkansas Riverbed Authority and the Choctaw, Chickasaw and Cherokee Nations of Oklahoma. Accuracy and acreages defined by the original survey documentation.

Note: See Exhibit "A" enlargement of the official Bureau of Land Management Plat attached.



SURVEYOR'S SPECIAL NOTE:

1. MEANING AND INTENDING TO DESCRIBE THE PARCEL DERIVED FROM THE OFFICIAL BUREAU OF LAND MANAGEMENT PLATS AND FIELDNOTES OF THE DEPENDENT RESURVEY AND SURVEY OF THE ARKANSAS RIVER BED APPROVED MARCH 12, 2008. THE PURPOSE OF THIS DESCRIPTION IS TO DESCRIBE THE WET BED AREAS AS SHOWN ON THE PLAT. THIS IS EXCLUSIVELY FOR USE BY THE ARKANSAS RIVERBED AUTHORITY AND THE CHOCTAW, CHICKASAW AND CHEROKEE NATIONS OF OKLAHOMA. ACCURACY AND ACREAGES DEFINED BY THE ORIGINAL SURVEY DOCUMENTATION.

2. THIS IS NOT A BOUNDARY SURVEY AND IS NOT INTENDED TO BE USED AS A BOUNDARY SURVEY. NO FIELD WORK HAS BEEN DONE AND NO MONUMENTS HAVE BEEN VERIFIED.

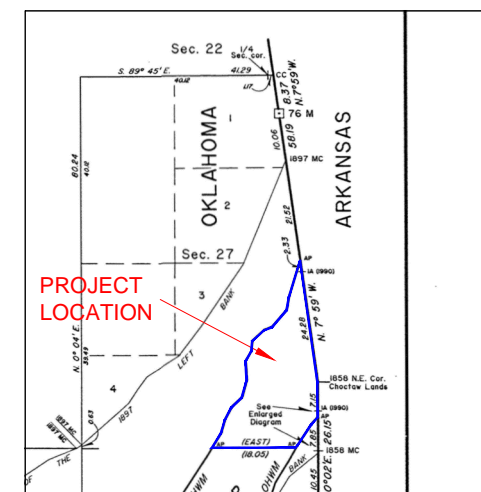
LEGEND

These standard symbols may be found in the drawing.

- CALCULATED AREA LIMITS
- ▲ CALCULATED CORNER (NOTHING SET)



David L. Page, Jr. (8/28/20)
LS #1566



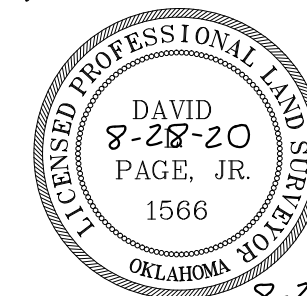
LOCATION MAP



124 SOUTH 8th AVENUE
DURANT, OKLAHOMA 74701
(580) 920-9101 OR (580) 239-0176
FAX (580) 920-9121

DAVID L. PAGE JR. © 2020
PROFESSIONAL LAND SURVEYOR #1566
C.A. # 1991, EXPIRES 6-30-2021

Surveyor's Seal



8-28-20
DATE SIGNED

David L. Page Jr.
DAVID L. PAGE, JR. P.L.S. #1566

LOCATION

SECTION 27
TOWNSHIP 11 NORTH, RANGE 27 EAST
LEFLORE AND SEQUOYAH COUNTY

GENERAL NOTES

SUBJECT TO EASEMENTS AND/OR RIGHTS-OF-WAY, EITHER RECORDED, OR IMPLIED, THEREOF.

NO UTILITIES OF ANY KIND HAVE BEEN LOCATED EXCEPT THOSE SHOWN ON THE ABOVE PLAT

CONTROLLING CORNERS FOR THIS LEGAL DESCRIPTION ARE AS INDICATED ON THE LOCATION MAP

THIS IS NOT A VALID LEGAL DESCRIPTION WITHOUT THE SURVEYORS ORIGINAL SIGNATURE AND ORIGINAL SEAL

PORTIONS OF THIS PLAT ARE IN COLOR. PHOTO AND ELECTRONIC COPIES OF THIS PLAT MAKE IT INVALID AND MAY ALTER ITS MEANING

THIS EXHIBIT AND LEGAL DESCRIPTION MEETS THE OKLAHOMA MINIMUM STANDARDS FOR THE PRACTICE OF LAND SURVEYING AS ADOPTED BY THE OKLAHOMA STATE BOARD OF LICENSURE FOR PROFESSIONAL ENGINEERS AND LAND SURVEYORS.

NO.	REVISION/ISSUE	DATE

SURVEY INFORMATION

FIELD WORK PERFORMED: NONE
DATE OF LAST SITE VISIT: NONE
EXHIBIT COMPLETED: 8-28-20

Project Name and Address
ARKANSAS RIVER EXHIBIT
SECTION 27, TOWNSHIP 11 NORTH, RANGE 27 EAST
LEFLORE AND SEQUOYAH COUNTY, STATE OF OKLAHOMA.

SCALE 1" = 1000'

SHEET NO. 1 OF 1

DATE 8-28-20

LEGAL DESCRIPTION:

A parcel of land situated in section 27 of township 11 north, range 27 east, Indian Meridian, LeFlore and Sequoyah County, Oklahoma, being the wet bed acres of section 27, and being more particularly described as follows:

BEGINNING at the angle point on the East boundary of section 27 on the State Line between Arkansas and Oklahoma, at the digitized 2003 left bank ordinary high-water mark, upstream along said mark in section 27;

THENCE, upstream along aforesaid mark, S. 17°20' W., 537.90 feet;

THENCE, S. 10°02' W., 196.68 feet;

THENCE, S. 41°04' W., 319.44 feet;

THENCE, S. 68°50' W., 118.80 feet;

THENCE, S. 47°37' W., 225.06 feet;

THENCE, S. 05°40' W., 149.16 feet;

THENCE, S. 30°40' W., 156.42 feet;

THENCE, S. 02°35' E., 281.16 feet;

THENCE, S. 15°42' W., 252.78 feet;

THENCE, S. 47°14' W., 198.66 feet;

THENCE, S. 28°12' W., 197.34 feet;

THENCE, S. 16°16' W., 206.58 feet;

THENCE, S. 31°15' W., 253.44 feet to the angle point of sections 27 and 34, at the digitized 2003 left bank ordinary high-water mark;

THENCE, N. 90°00' E., along the line between sections 27 and 34, 1191.30 feet to the angle point of sections 27 and 34, at the digitized 2003 right bank ordinary high-water mark, downstream along said mark;

THENCE, downstream along aforesaid mark, N. 29°52' E., 48.18 feet;

THENCE, N. 33°27' E., 366.96 feet;

THENCE, N. 42°11' E., 128.04 feet to the angle point on the East boundary of section 27 on the State Line between Arkansas and Oklahoma, at the digitized 2003 right bank ordinary high-water mark ;

THENCE, N. 00°02' E., along the East boundary of section 27 on the State Line between Arkansas and Oklahoma, 491.17 feet to the 1858 N.E. corner of Choctaw lands;

THENCE, N. 07°59' W., along the East boundary of section 27 on the State Line between Arkansas and Oklahoma, 1756.26 feet to the **POINT OF BEGINNING**, containing +/- 46.19 acres.

BASIS OF BEARINGS: As shown on the official BLM plat, approved March 12, 2008, referenced to the true meridian.

Meaning and intending to describe the parcel derived from the Official Bureau of Land Management plats and field notes of the Dependent Resurvey and Survey of the Arkansas River Bed approved March 12, 2008. The purpose of this description is to describe the wet bed areas as shown on the plat. This is exclusively for use by the Arkansas Riverbed Authority and the Choctaw, Chickasaw and Cherokee Nations of Oklahoma. Accuracy and acreages defined by the original survey documentation.

Note: See Exhibit "A" enlargement of the official Bureau of Land Management Plat attached.

David L. Page, Jr. (8/28/20)
LS #1566

David L. Page

DAVID L. PAGE, JR. P.L.S. #1566

8-28-20
DATE SIGNED



EXHIBIT "A"

~BASIS OF BEARING~
As shown on the official BLM plat, approved March 12, 2008, referenced to the true meridian.

LEGAL DESCRIPTION EXHIBIT

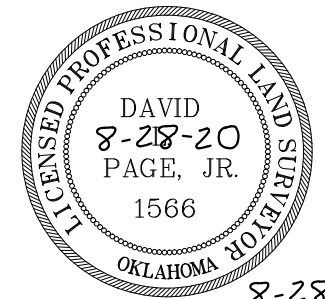
SECTION 34, TOWNSHIP 11 NORTH, RANGE 27 EAST
LEFLORE AND SEQUOYAH COUNTY, STATE OF OKLAHOMA.



124 SOUTH 8th AVENUE
DURANT, OKLAHOMA 74701
(580) 920-9101 OR (580) 239-0176
FAX (580) 920-9121

DAVID L. PAGE JR. © 2020
PROFESSIONAL LAND SURVEYOR #1566
C.A. # 1991, EXPIRES 6-30-2021

Surveyor's Seal



8-28-20
DATE SIGNED

David L. Page
DAVID L. PAGE, JR. P.L.S. #1566

LOCATION
SECTION 34
TOWNSHIP 11 NORTH, RANGE 27 EAST
LEFLORE AND SEQUOYAH COUNTY

GENERAL NOTES

SUBJECT TO EASEMENTS AND/OR RIGHTS-OF-WAY, EITHER RECORDED, OR IMPLIED, THEREOF.
NO UTILITIES OF ANY KIND HAVE BEEN LOCATED EXCEPT THOSE SHOWN ON THE ABOVE PLAT
CONTROLLING CORNERS FOR THIS LEGAL DESCRIPTION ARE AS INDICATED ON THE LOCATION MAP
THIS IS NOT A VALID LEGAL DESCRIPTION WITHOUT THE SURVEYORS ORIGINAL SIGNATURE AND ORIGINAL SEAL
PORTIONS OF THIS PLAT ARE IN COLOR. PHOTO AND ELECTRONIC COPIES OF THIS PLAT MAKE IT INVALID AND MAY ALTER ITS MEANING
THIS EXHIBIT AND LEGAL DESCRIPTION MEETS THE OKLAHOMA MINIMUM STANDARDS FOR THE PRACTICE OF LAND SURVEYING AS ADOPTED BY THE OKLAHOMA STATE BOARD OF LICENSURE FOR PROFESSIONAL ENGINEERS AND LAND SURVEYORS.

NO.	REVISION/ISSUE	DATE

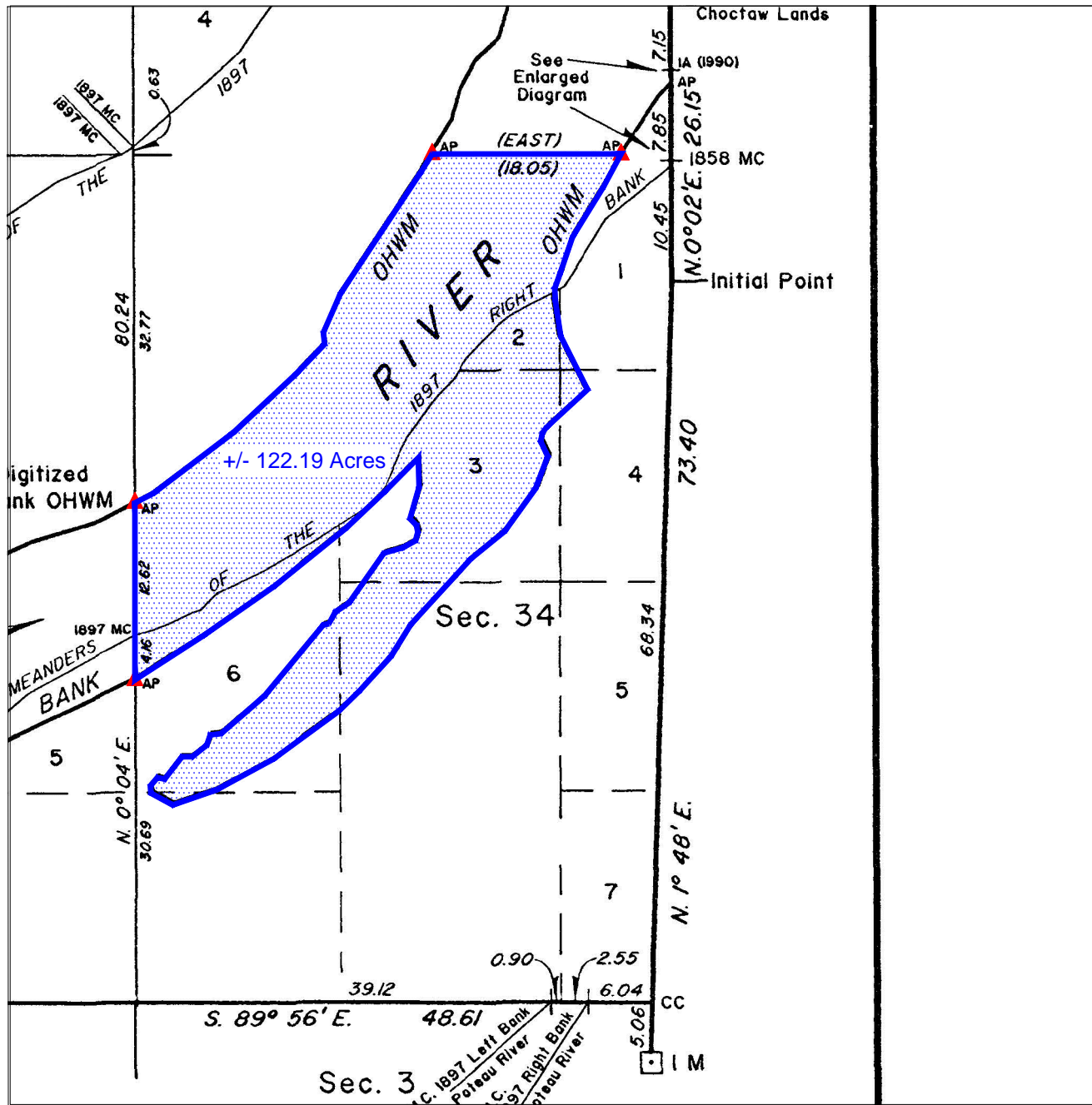
SURVEY INFORMATION	
FIELD WORK PERFORMED:	NONE
DATE OF LAST SITE VISIT:	NONE
EXHIBIT COMPLETED:	8-28-20

Project Name and Address
ARKANSAS RIVER EXHIBIT
SECTION 34, TOWNSHIP 11 NORTH, RANGE 27 EAST
LEFLORE AND SEQUOYAH COUNTY, STATE OF OKLAHOMA.

SCALE 1" = 1000'

SHEET NO. 1 OF 1

DATE 8-28-20



LEGEND

These standard symbols may be found in the drawing.

- CALCULATED AREA LIMITS
- ▲ CALCULATED CORNER (NOTHING SET)



SURVEYOR'S SPECIAL NOTE:

1. MEANING AND INTENDING TO DESCRIBE THE PARCEL DERIVED FROM THE OFFICIAL BUREAU OF LAND MANAGEMENT PLATS AND FIELDNOTES OF THE DEPENDENT RESURVEY AND SURVEY OF THE ARKANSAS RIVER BED APPROVED MARCH 12, 2008. THE PURPOSE OF THIS DESCRIPTION IS TO DESCRIBE THE WET BED AREAS AS SHOWN ON THE PLAT. THIS IS EXCLUSIVELY FOR USE BY THE ARKANSAS RIVERBED AUTHORITY AND THE CHOCTAW, CHICKASAW AND CHEROKEE NATIONS OF OKLAHOMA. ACCURACY AND ACREAGES DEFINED BY THE ORIGINAL SURVEY DOCUMENTATION.

2. THIS IS NOT A BOUNDARY SURVEY AND IS NOT INTENDED TO BE USED AS A BOUNDARY SURVEY. NO FIELD WORK HAS BEEN DONE AND NO MONUMENTS HAVE BEEN VERIFIED.

LEGAL DESCRIPTION:

A parcel of land situated in section 34 of township 11 north, range 27 east, Indian Meridian, LeFlore and Sequoyah County, Oklahoma, being the wet bed acres of section 34, and being more particularly described as follows:

BEGINNING at the angle point of sections 27 and 34, at the digitized 2003 left bank ordinary high-water mark, upstream along said mark in section 34;

THENCE, upstream along aforesaid mark, S. 31°15' W., 114.84 feet;

THENCE, S. 33°30' W., 906.84 feet;

THENCE, S. 23°44' W., 265.98 feet;

THENCE, S. 05°36' E., 73.26 feet;

THENCE, S. 43°39' W., 260.04 feet;

THENCE, S. 46°54' W., 532.62 feet;

THENCE, S. 52°50' W., 629.64 feet;

THENCE, S. 62°24' W., 129.36 feet to the angle point of sections 33 and 34, at the digitized 2003 left bank ordinary high-water mark;

THENCE, S. 00°04' W., along the line between sections 33 and 34, 1107.48 feet to the angle point of sections 33 and 34, at the digitized 2003 right bank ordinary high-water mark, downstream along said mark;

THENCE, downstream along aforesaid mark, N. 57°14' E., 504.90 feet;

THENCE, N. 55°06' E., 540.54 feet;

THENCE, N. 51°02' E., 580.80 feet;

THENCE, N. 46°45' E., 326.70 feet;

THENCE, N. 44°45' E., 306.24 feet;

THENCE, S. 01°22' E., 184.14 feet;

THENCE, S. 15°59' W., 203.94 feet;

THENCE, S. 43°24' E., 58.08 feet;

THENCE, S. 11°14' E., 43.56 feet;

THENCE, S. 14°44' W., 54.78 feet;

THENCE, S. 60°54' W., 91.74 feet;

THENCE, S. 74°14' W., 121.44 feet;

THENCE, S. 35°10' W., 380.82 feet;

THENCE, S. 56°25' W., 102.30 feet;

THENCE, S. 28°54' W., 85.14 feet;

THENCE, S. 79°19' W., 33.66 feet;

THENCE, S. 39°40' W., 580.14 feet;

THENCE, S. 49°03' W., 357.72 feet;

THENCE, S. 83°19' W., 67.98 feet;

THENCE, S. 18°46' W., 67.32 feet;

THENCE, S. 51°42' W., 116.82 feet;

THENCE, S. 89°10' W., 64.02 feet;

THENCE, S. 37°47' W., 176.88 feet;

THENCE, N. 76°32' W., 45.54 feet;

THENCE, S. 40°11' W., 67.98 feet;

THENCE, S. 03°11' E., 45.54 feet;

THENCE, S. 61°19' E., 155.78 feet;

THENCE, N. 70°54' E., 289.08 feet;

THENCE, N. 61°38' E., 403.26 feet;

THENCE, N. 53°45' E., 506.22 feet;

THENCE, N. 45°55' E., 178.86 feet;

THENCE, N. 42°19' E., 296.34 feet;

THENCE, N. 31°57' E., 235.62 feet;

THENCE, N. 42°20' E., 558.36 feet;

THENCE, N. 50°58' E., 271.26 feet;

THENCE, N. 35°46' E., 329.34 feet;

THENCE, N. 20°53' E., 215.82 feet;

THENCE, N. 25°38' W., 102.30 feet;

THENCE, N. 11°30' E., 52.80 feet;

THENCE, N. 34°04' E., 40.92 feet;

THENCE, N. 47°36' E., 322.74 feet;

THENCE, N. 25°33' W., 392.70 feet;

THENCE, N. 08°48' W., 229.68 feet;

THENCE, N. 15°19' E., 75.90 feet;

THENCE, N. 20°31' E., 96.36 feet;

THENCE, N. 18°35' E., 244.86 feet;

THENCE, N. 31°43' E., 360.36 feet;

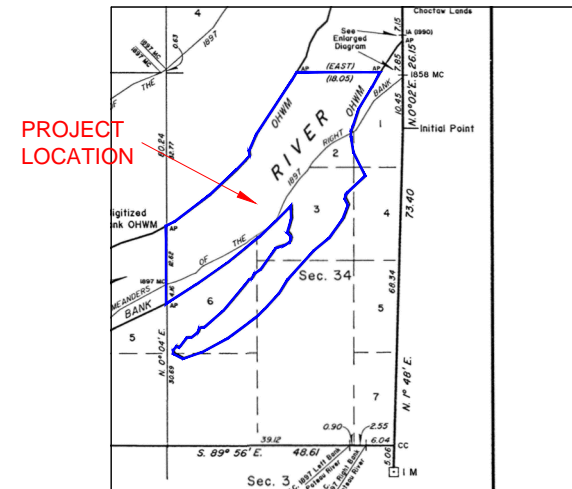
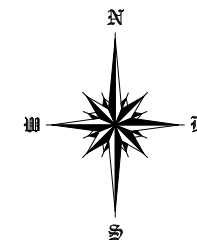
THENCE, N. 29°52' E., 222.42 feet to the angle point of sections 27 and 34, at the digitized 2003 right bank ordinary high-water mark;

THENCE, S. 90°00' W., along the line between sections 27 and 34, 1191.30 feet to the **POINT OF BEGINNING**, containing +/- 122.19 acres.

BASIS OF BEARINGS: As shown on the official BLM plat, approved March 12, 2008, referenced to the true meridian.

Meaning and intending to describe the parcel derived from the Official Bureau of Land Management plats and field notes of the Dependent Resurvey and Survey of the Arkansas River Bed approved March 12, 2008. The purpose of this description is to describe the wet bed areas as shown on the plat. This is exclusively for use by the Arkansas Riverbed Authority and the Choctaw, Chickasaw and Cherokee Nations of Oklahoma. Accuracy and acreages defined by the original survey documentation.

Note: See Exhibit "A" enlargement of the official Bureau of Land Management Plat attached.



LEGAL DESCRIPTION:

A parcel of land situated in section 34 of township 11 north, range 27 east, Indian Meridian, LeFlore and Sequoyah County, Oklahoma, being the wet bed acres of section 34, and being more particularly described as follows:

BEGINNING at the angle point of sections 27 and 34, at the digitized 2003 left bank ordinary high-water mark, upstream along said mark in section 34;

THENCE, upstream along aforesaid mark, S. 31°15' W., 114.84 feet;

THENCE, S. 33°30' W., 906.84 feet;

THENCE, S. 23°44' W., 265.98 feet;

THENCE, S. 05°36' E., 73.26 feet;

THENCE, S. 43°39' W., 260.04 feet;

THENCE, S. 46°54' W., 532.62 feet;

THENCE, S. 52°50' W., 629.64 feet;

THENCE, S. 62°24' W., 129.36 feet to the angle point of sections 33 and 34, at the digitized 2003 left bank ordinary high-water mark;

THENCE, S. 00°04' W., along the line between sections 33 and 34, 1107.48 feet to the angle point of sections 33 and 34, at the digitized 2003 right bank ordinary high-water mark, downstream along said mark;

THENCE, downstream along aforesaid mark, N. 57°14' E., 504.90 feet;

THENCE, N. 55°06' E., 540.54 feet;

THENCE, N. 51°02' E., 580.80 feet;

THENCE, N. 46°45' E., 326.70 feet;

THENCE, N. 44°45' E., 306.24 feet;

THENCE, S. 01°22' E., 184.14 feet;

THENCE, S. 15°59' W., 203.94 feet;

THENCE, S. 43°24' E., 58.08 feet;

THENCE, S. 11°14' E., 43.56 feet;

THENCE, S. 14°44' W., 54.78 feet;

THENCE, S. 60°54' W., 91.74 feet;

THENCE, S. 74°14' W., 121.44 feet;

THENCE, S. 35°10' W., 380.82 feet;

THENCE, S. 56°25' W., 102.30 feet;

THENCE, S. 28°54' W., 85.14 feet;

THENCE, S. 79°19' W., 33.66 feet;

THENCE, S. 39°40' W., 580.14 feet;

THENCE, S. 49°03' W., 357.72 feet;

THENCE, S. 83°19' W., 67.98 feet;

THENCE, S. 18°46' W., 67.32 feet;

THENCE, S. 51°42' W., 116.82 feet;

THENCE, S. 89°10' W., 64.02 feet;

THENCE, S. 37°47' W., 176.88 feet;

THENCE, N. 76°32' W., 45.54 feet;

THENCE, S. 40°11' W., 67.98 feet;

THENCE, S. 03°11' E., 45.54 feet;

THENCE, S. 61°19' E., 155.76 feet;

THENCE, N. 70°54' E., 289.08 feet;

THENCE, N. 61°38' E., 403.26 feet;

THENCE, N. 53°45' E., 506.22 feet;

THENCE, N. 45°55' E., 178.86 feet;

THENCE, N. 42°19' E., 296.34 feet;

THENCE, N. 31°57' E., 235.62 feet;

THENCE, N. 42°20' E., 558.36 feet;

THENCE, N. 50°58' E., 271.26 feet;

THENCE, N. 35°46' E., 329.34 feet;

THENCE, N. 20°53' E., 215.82 feet;

THENCE, N. 25°38' W., 102.30 feet;

THENCE, N. 11°30' E., 52.80 feet;

THENCE, N. 34°04' E., 40.92 feet;

THENCE, N. 47°36' E., 322.74 feet;

THENCE, N. 25°33' W., 392.70 feet;

THENCE, N. 08°48' W., 229.68 feet;

THENCE, N. 15°19' E., 75.90 feet;

THENCE, N. 20°31' E., 96.36 feet;

THENCE, N. 18°35' E., 244.86 feet;

THENCE, N. 31°43' E., 360.36 feet;

THENCE, N. 29°52' E., 222.42 feet to the angle point of sections 27 and 34, at the digitized 2003 right bank ordinary high-water mark;

THENCE, S. 90°00' W., along the line between sections 27 and 34, 1191.30 feet to the **POINT OF BEGINNING**, containing +/- 122.19 acres.

BASIS OF BEARINGS: As shown on the official BLM plat, approved March 12, 2008, referenced to the true meridian.

Meaning and intending to describe the parcel derived from the Official Bureau of Land Management plats and field notes of the Dependent Resurvey and Survey of the Arkansas River Bed approved March 12, 2008. The purpose of this description is to describe the wet bed areas as shown on the plat. This is exclusively for use by the Arkansas Riverbed Authority and the Choctaw, Chickasaw and Cherokee Nations of Oklahoma. Accuracy and acreages defined by the original survey documentation.

Note: See Exhibit "A" enlargement of the official Bureau of Land Management Plat attached.

David L. Page
DAVID L. PAGE, JR. P.L.S. #1566

8-28-20
DATE SIGNED

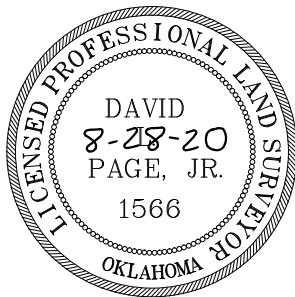


EXHIBIT "A"

~BASIS OF BEARING~
As shown on the official BLM plat, approved March 12, 2008, referenced to the true meridian.

LEGAL DESCRIPTION EXHIBIT

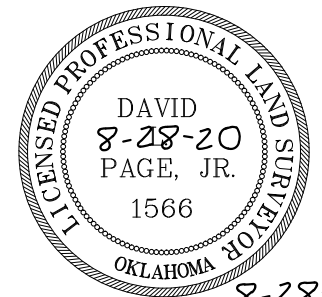
SECTION 33, TOWNSHIP 11 NORTH, RANGE 27 EAST
LEFLORE AND SEQUOYAH COUNTY, STATE OF OKLAHOMA.



124 SOUTH 8th AVENUE
DURANT, OKLAHOMA 74701
(580) 920-9101 OR (580) 239-0176
FAX (580) 920-9121

DAVID L. PAGE JR. © 2020
PROFESSIONAL LAND SURVEYOR #1566
C.A. # 1991, EXPIRES 6-30-2021

Surveyor's Seal



8-28-20
DATE SIGNED

David L. Page
DAVID L. PAGE, JR. P.L.S. #1566

LOCATION
SECTION 33
TOWNSHIP 11 NORTH, RANGE 27 EAST
LEFLORE AND SEQUOYAH COUNTY

GENERAL NOTES

SUBJECT TO EASEMENTS AND/OR RIGHTS-OF-WAY, EITHER RECORDED, OR IMPLIED, THEREOF.
NO UTILITIES OF ANY KIND HAVE BEEN LOCATED EXCEPT THOSE SHOWN ON THE ABOVE PLAT
CONTROLLING CORNERS FOR THIS LEGAL DESCRIPTION ARE AS INDICATED ON THE LOCATION MAP
THIS IS NOT A VALID LEGAL DESCRIPTION WITHOUT THE SURVEYORS ORIGINAL SIGNATURE AND ORIGINAL SEAL
PORTIONS OF THIS PLAT ARE IN COLOR. PHOTO AND ELECTRONIC COPIES OF THIS PLAT MAKE IT INVALID AND MAY ALTER ITS MEANING
THIS EXHIBIT AND LEGAL DESCRIPTION MEETS THE OKLAHOMA MINIMUM STANDARDS FOR THE PRACTICE OF LAND SURVEYING AS ADOPTED BY THE OKLAHOMA STATE BOARD OF LICENSURE FOR PROFESSIONAL ENGINEERS AND LAND SURVEYORS.

NO.	REVISION/ISSUE	DATE

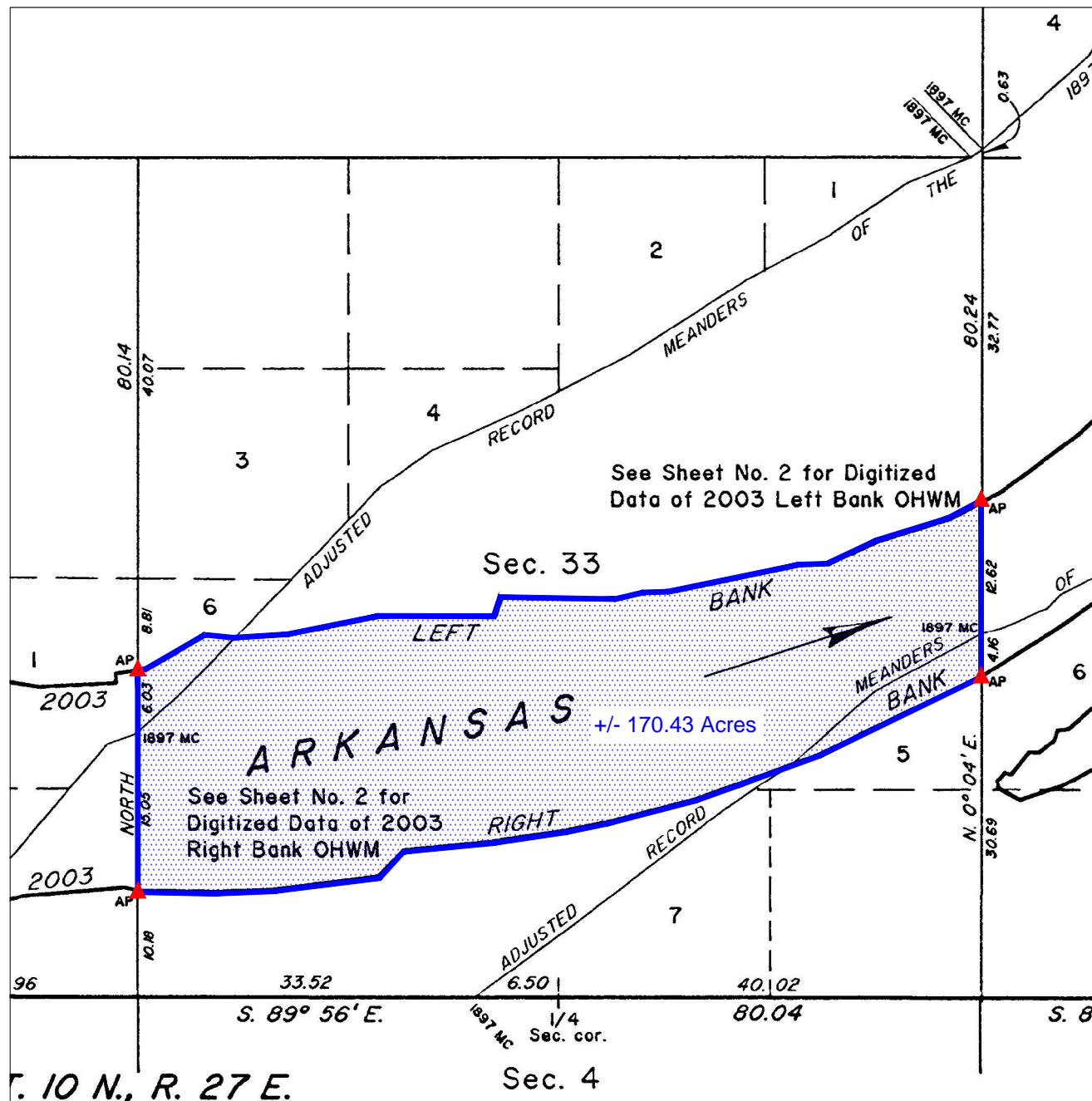
SURVEY INFORMATION	
FIELD WORK PERFORMED:	NONE
DATE OF LAST SITE VISIT:	NONE
EXHIBIT COMPLETED:	8-28-20

Project Name and Address
ARKANSAS RIVER EXHIBIT
SECTION 33, TOWNSHIP 11 NORTH, RANGE 27 EAST
LEFLORE AND SEQUOYAH COUNTY, STATE OF OKLAHOMA.

SCALE 1" = 1000'

SHEET NO. 1 OF 1

DATE 8-28-20



LEGAL DESCRIPTION:

A parcel of land situated in section 33 of township 11 north, range 27 east, Indian Meridian, LeFlore and Sequoyah County, Oklahoma, being the wet bed acres of section 33, and being more particularly described as follows:

BEGINNING at the angle point of sections 33 and 34, at the digitized 2003 left bank ordinary high-water mark, upstream along said mark in section 33;

THENCE, upstream along aforesaid mark, S. 61°49' W., 234.96 feet;

THENCE, S. 72°47' W., 467.94 feet;

THENCE, S. 64°47' W., 346.50 feet;

THENCE, S. 88°03' W., 172.92 feet;

THENCE, S. 78°20' W., 841.50 feet;

THENCE, S. 88°17' W., 154.44 feet;

THENCE, S. 76°50' W., 182.82 feet;

THENCE, N. 88°58' W., 716.76 feet;

THENCE, S. 18°46' W., 127.38 feet;

THENCE, N. 89°47' W., 724.02 feet;

THENCE, S. 78°32' W., 578.16 feet;

THENCE, S. 86°14' W., 342.54 feet;

THENCE, N. 84°04' W., 180.84 feet;

THENCE, S. 59°52' W., 429.66 feet;

THENCE, S. 81°56' W., 47.52 feet to the angle point of sections 32 and 33, at the digitized 2003 left bank ordinary high-water mark;

THENCE, S. 00°00' E., along the line between sections 32 and 33, 1391.28 feet to the angle point of sections 32 and 33, at the digitized 2003 right bank ordinary high-water mark, downstream along said mark;

THENCE, downstream along aforesaid mark, S. 88°56' E., 475.20 feet;

THENCE, N. 87°55' E., 371.58 feet;

THENCE, N. 82°50' E., 673.20 feet;

THENCE, N. 42°41' E., 223.08 feet;

THENCE, N. 84°27' E., 558.36 feet;

THENCE, N. 81°30' E., 464.64 feet;

THENCE, N. 78°29' E., 262.02 feet;

THENCE, N. 75°21' E., 575.52 feet;

THENCE, N. 70°15' E., 287.10 feet;

THENCE, N. 69°59' E., 537.90 feet;

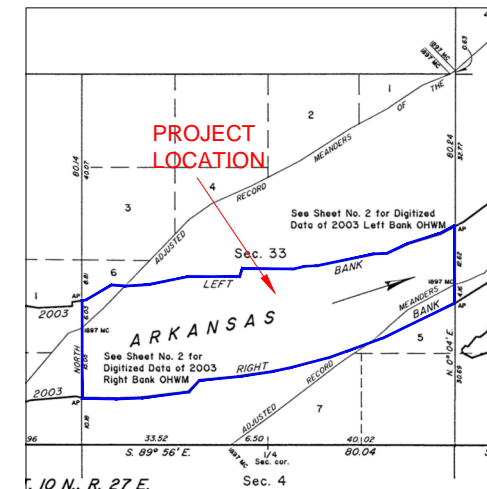
THENCE, N. 64°05' E., 1128.60 feet to the angle point of sections 33 and 34, at the digitized 2003 right bank ordinary high-water mark;

THENCE, N. 00°04' E., along the line between sections 33 and 34, 1107.48 feet to the **POINT OF BEGINNING**, containing +/- 170.43 acres.

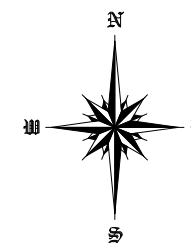
BASIS OF BEARINGS: As shown on the official BLM plat, approved March 12, 2008, referenced to the true meridian.

Meaning and intending to describe the parcel derived from the Official Bureau of Land Management plats and field notes of the Dependent Resurvey and Survey of the Arkansas River Bed approved March 12, 2008. The purpose of this description is to describe the wet bed areas as shown on the plat. This is exclusively for use by the Arkansas Riverbed Authority and the Choctaw, Chickasaw and Cherokee Nations of Oklahoma. Accuracy and acreages defined by the original survey documentation.

Note: See Exhibit "A" enlargement of the official Bureau of Land Management Plat attached.



LOCATION MAP



LEGEND

These standard symbols may be found in the drawing.

- CALCULATED AREA LIMITS
- CALCULATED CORNER (NOTHING SET)



SURVEYOR'S SPECIAL NOTE:

1. MEANING AND INTENDING TO DESCRIBE THE PARCEL DERIVED FROM THE OFFICIAL BUREAU OF LAND MANAGEMENT PLATS AND FIELDNOTES OF THE DEPENDENT RESURVEY AND SURVEY OF THE ARKANSAS RIVER BED APPROVED MARCH 12, 2008. THE PURPOSE OF THIS DESCRIPTION IS TO DESCRIBE THE WET BED AREAS AS SHOWN ON THE PLAT. THIS IS EXCLUSIVELY FOR USE BY THE ARKANSAS RIVERBED AUTHORITY AND THE CHOCTAW, CHICKASAW AND CHEROKEE NATIONS OF OKLAHOMA. ACCURACY AND ACREAGES DEFINED BY THE ORIGINAL SURVEY DOCUMENTATION.

2. THIS IS NOT A BOUNDARY SURVEY AND IS NOT INTENDED TO BE USED AS A BOUNDARY SURVEY. NO FIELD WORK HAS BEEN DONE AND NO MONUMENTS HAVE BEEN VERIFIED.

David L. Page, Jr. (8/28/20)
LS #1566

LEGAL DESCRIPTION:

A parcel of land situated in section 33 of township 11 north, range 27 east, Indian Meridian, LeFlore and Sequoyah County, Oklahoma, being the wet bed acres of section 33, and being more particularly described as follows:

BEGINNING at the angle point of sections 33 and 34, at the digitized 2003 left bank ordinary high-water mark, upstream along said mark in section 33;

THENCE, upstream along aforesaid mark, S. 61°49' W., 234.96 feet;

THENCE, S. 72°47' W., 467.94 feet;

THENCE, S. 64°47' W., 346.50 feet;

THENCE, S. 88°03' W., 172.92 feet;

THENCE, S. 78°20' W., 841.50 feet;

THENCE, S. 88°17' W., 154.44 feet;

THENCE, S. 76°50' W., 182.82 feet;

THENCE, N. 88°58' W., 716.76 feet;

THENCE, S. 18°46' W., 127.38 feet;

THENCE, N. 89°47' W., 724.02 feet;

THENCE, S. 78°32' W., 578.16 feet;

THENCE, S. 86°14' W., 342.54 feet;

THENCE, N. 84°04' W., 180.84 feet;

THENCE, S. 59°52' W., 429.66 feet;

THENCE, S. 81°56' W., 47.52 feet to the angle point of sections 32 and 33, at the digitized 2003 left bank ordinary high-water mark;

THENCE, S. 00°00' E., along the line between sections 32 and 33, 1391.28 feet to the angle point of sections 32 and 33, at the digitized 2003 right bank ordinary high-water mark, downstream along said mark;

THENCE, downstream along aforesaid mark, S. 88°56' E., 475.20 feet;

THENCE, N. 87°55' E., 371.58 feet;

THENCE, N. 82°50' E., 673.20 feet;

THENCE, N. 42°41' E., 223.08 feet;

THENCE, N. 84°27' E., 558.36 feet;

THENCE, N. 81°30' E., 464.64 feet;

THENCE, N. 78°29' E., 262.02 feet;

THENCE, N. 75°21' E., 575.52 feet;

THENCE, N. 70°15' E., 287.10 feet;

THENCE, N. 69°59' E., 537.90 feet;

THENCE, N. 64°05' E., 1128.60 feet to the angle point of sections 33 and 34, at the digitized 2003 right bank ordinary high-water mark;

THENCE, N. 00°04' E., along the line between sections 33 and 34, 1107.48 feet to the **POINT OF BEGINNING**, containing +/- 170.42 acres.

BASIS OF BEARINGS: As shown on the official BLM plat, approved March 12, 2008, referenced to the true meridian.

Meaning and intending to describe the parcel derived from the Official Bureau of Land Management plats and field notes of the Dependent Resurvey and Survey of the Arkansas River Bed approved March 12, 2008. The purpose of this description is to describe the wet bed areas as shown on the plat. This is exclusively for use by the Arkansas Riverbed Authority and the Choctaw, Chickasaw and Cherokee Nations of Oklahoma. Accuracy and acreages defined by the original survey documentation.

Note: See Exhibit "A" enlargement of the official Bureau of Land Management Plat attached.

David L. Page, Jr.
DAVID L. PAGE, JR. P.L.S. #1566
8-28-20
DATE SIGNED

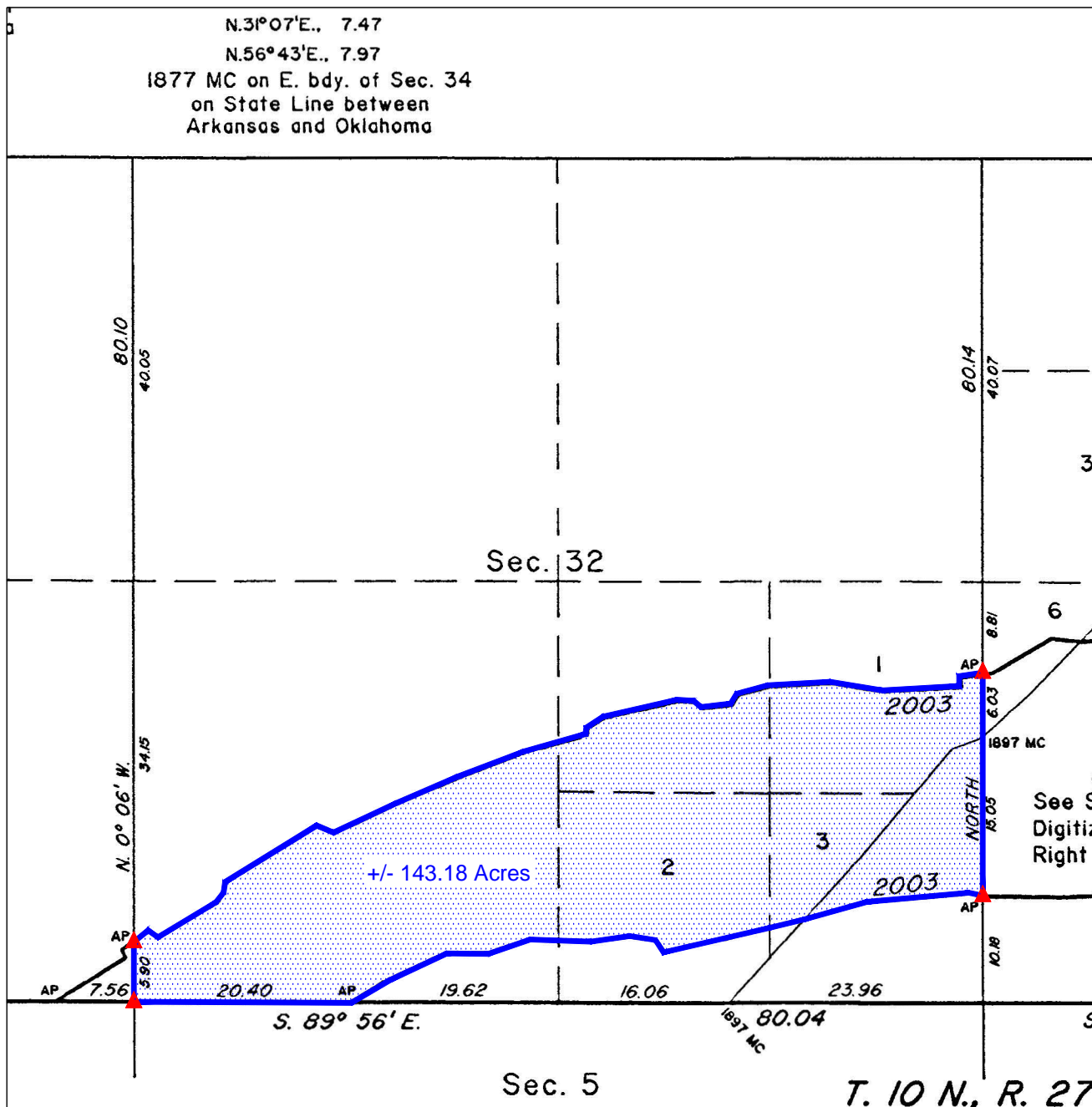


EXHIBIT "A"

~BASIS OF BEARING~
As shown on the official BLM plat, approved March 12, 2008, referenced to the true meridian.

LEGAL DESCRIPTION EXHIBIT

SECTION 32, TOWNSHIP 11 NORTH, RANGE 27 EAST
LEFLORE AND SEQUOYAH COUNTY, STATE OF OKLAHOMA.



LEGAL DESCRIPTION:

A parcel of land situated in section 32 of township 11 north, range 27 east, Indian Meridian, LeFlore and Sequoyah County, Oklahoma, being the wet bed acres of section 32, and being more particularly described as follows:

BEGINNING at the angle point of sections 32 and 33, at the digitized 2003 left bank ordinary high-water mark, upstream along said mark in section 33;

THENCE, upstream along aforesaid mark, S. 81°56' W., 148.50 feet;

THENCE, S. 00°46' W., 61.38 feet;

THENCE, S. 86°52' W., 478.50 feet;

THENCE, N. 80°39' W., 329.34 feet;

THENCE, S. 86°49' W., 389.40 feet;

THENCE, S. 74°53' W., 202.62 feet;

THENCE, S. 30°45' W., 71.94 feet;

THENCE, S. 83°22' W., 186.78 feet;

THENCE, N. 49°38' W., 60.06 feet;

THENCE, N. 86°31' W., 103.62 feet;

THENCE, S. 77°02' W., 473.22 feet;

THENCE, S. 56°58' W., 123.42 feet;

THENCE, S. 07°59' W., 39.60 feet;

THENCE, S. 74°12' W., 399.96 feet;

THENCE, S. 69°06' W., 440.88 feet;

THENCE, S. 66°36' W., 414.48 feet;

THENCE, S. 64°54' W., 435.60 feet;

THENCE, N. 67°06' W., 113.52 feet;

THENCE, S. 58°21' W., 670.56 feet;

THENCE, S. 08°43' W., 66.66 feet;

THENCE, S. 38°12' W., 77.22 feet;

THENCE, S. 58°54' W., 421.74 feet;

THENCE, N. 54°39' W., 74.58 feet;

THENCE, S. 52°39' W., 100.32 feet to the angle point of sections 31 and 32, at the digitized 2003 left bank ordinary high-water mark;

THENCE, S. 00°06' E., along the line between sections 31 and 32, 389.40 feet to the corner of sections 31, 32, 5 and 6;

THENCE, S. 89°56' E., along the line between sections 5 and 32, 1346.40 feet to the angle point of sections 5 and 32, at the digitized 2003 right bank ordinary high-water mark, downstream along said mark;

THENCE, downstream along aforesaid mark, N. 59°28' E., 281.82 feet;

THENCE, N. 65°05' E., 388.74 feet;

THENCE, S. 89°28' E., 258.06 feet;

THENCE, N. 70°59' E., 276.54 feet;

THENCE, S. 88°01' E., 377.52 feet;

THENCE, N. 81°58' E., 246.18 feet;

THENCE, S. 81°09' E., 161.70 feet;

THENCE, S. 32°57' E., 91.08 feet;

THENCE, N. 77°02' E., 677.16 feet;

THENCE, N. 76°18' E., 226.38 feet;

THENCE, N. 74°23' E., 404.58 feet;

THENCE, N. 84°55' E., 637.56 feet;

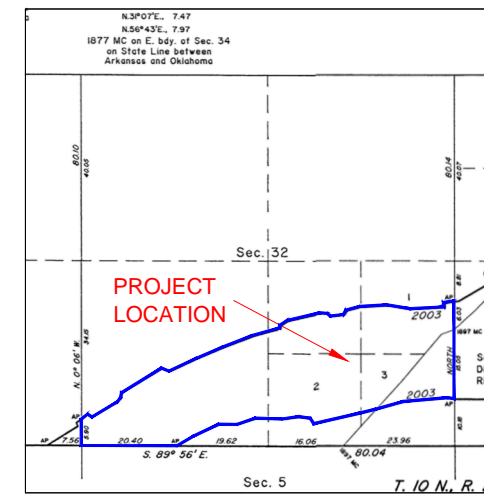
THENCE, S. 78°03' E., 88.44 feet to the angle point of sections 32 and 32, at the digitized 2003 right bank ordinary high-water mark ;

THENCE, N. 00°00' W., along the line between sections 32 and 33, 1391.28 feet to the **POINT OF BEGINNING**, containing +/- 143.18 acres.

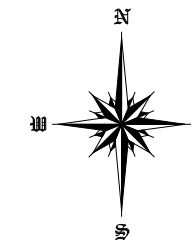
BASIS OF BEARINGS: As shown on the official BLM plat, approved March 12, 2008, referenced to the true meridian.

Meaning and intending to describe the parcel derived from the Official Bureau of Land Management plats and field notes of the Dependent Resurvey and Survey of the Arkansas River Bed approved March 12, 2008. The purpose of this description is to describe the wet bed areas as shown on the plat. This is exclusively for use by the Arkansas Riverbed Authority and the Choctaw, Chickasaw and Cherokee Nations of Oklahoma. Accuracy and acreages defined by the original survey documentation.

Note: See Exhibit "A" enlargement of the official Bureau of Land Management Plat attached.



LOCATION MAP





SURVEYOR'S SPECIAL NOTE:

1. MEANING AND INTENDING TO DESCRIBE THE PARCEL DERIVED FROM THE OFFICIAL BUREAU OF LAND MANAGEMENT PLATS AND FIELDNOTES OF THE DEPENDENT RESURVEY AND SURVEY OF THE ARKANSAS RIVER BED APPROVED MARCH 12, 2008. THE PURPOSE OF THIS DESCRIPTION IS TO DESCRIBE THE WET BED AREAS AS SHOWN ON THE PLAT. THIS IS EXCLUSIVELY FOR USE BY THE ARKANSAS RIVERBED AUTHORITY AND THE CHOCTAW, CHICKASAW AND CHEROKEE NATIONS OF OKLAHOMA. ACCURACY AND ACREAGES DEFINED BY THE ORIGINAL SURVEY DOCUMENTATION.

2. THIS IS NOT A BOUNDARY SURVEY AND IS NOT INTENDED TO BE USED AS A BOUNDARY SURVEY. NO FIELD WORK HAS BEEN DONE AND NO MONUMENTS HAVE BEEN VERIFIED.

LEGEND

These standard symbols may be found in the drawing.

-  CALCULATED AREA LIMITS
-  CALCULATED CORNER (NOTHING SET)



David L. Page, Jr. (8/28/20)
LS #1566



124 SOUTH 8th AVENUE
DURANT, OKLAHOMA 74701
(580) 920-9101 OR (580) 239-0176
FAX (580) 920-9121

DAVID L. PAGE JR. © 2020
PROFESSIONAL LAND SURVEYOR #1566
C.A. # 1991, EXPIRES 6-30-2021

Surveyor's Seal



8-28-20
DATE SIGNED

David L. Page
DAVID L. PAGE, JR. P.L.S. #1566

LOCATION
SECTION 32
TOWNSHIP 11 NORTH, RANGE 27 EAST
LEFLORE AND SEQUOYAH COUNTY

GENERAL NOTES

SUBJECT TO EASEMENTS AND/OR RIGHTS-OF-WAY, EITHER RECORDED, OR IMPLIED, THEREOF.

NO UTILITIES OF ANY KIND HAVE BEEN LOCATED EXCEPT THOSE SHOWN ON THE ABOVE PLAT

CONTROLLING CORNERS FOR THIS LEGAL DESCRIPTION ARE AS INDICATED ON THE LOCATION MAP

THIS IS NOT A VALID LEGAL DESCRIPTION WITHOUT THE SURVEYORS ORIGINAL SIGNATURE AND ORIGINAL SEAL

PORTIONS OF THIS PLAT ARE IN COLOR. PHOTO AND ELECTRONIC COPIES OF THIS PLAT MAKE IT INVALID AND MAY ALTER ITS MEANING

THIS EXHIBIT AND LEGAL DESCRIPTION MEETS THE OKLAHOMA MINIMUM STANDARDS FOR THE PRACTICE OF LAND SURVEYING AS ADOPTED BY THE OKLAHOMA STATE BOARD OF LICENSURE FOR PROFESSIONAL ENGINEERS AND LAND SURVEYORS.

NO.	REVISION/ISSUE	DATE

SURVEY INFORMATION	
FIELD WORK PERFORMED:	NONE
DATE OF LAST SITE VISIT:	NONE
EXHIBIT COMPLETED:	8-28-20

Project Name and Address
ARKANSAS RIVER EXHIBIT
SECTION 32, TOWNSHIP 11 NORTH, RANGE 27 EAST
LEFLORE AND SEQUOYAH COUNTY, STATE OF OKLAHOMA.

SCALE 1" = 1000'

SHEET NO. 1 OF 1

DATE 8-28-20

LEGAL DESCRIPTION:

A parcel of land situated in section 32 of township 11 north, range 27 east, Indian Meridian, LeFlore and Sequoyah County, Oklahoma, being the wet bed acres of section 32, and being more particularly described as follows:

BEGINNING at the angle point of sections 32 and 33, at the digitized 2003 left bank ordinary high-water mark, upstream along said mark in section 33;

THENCE, upstream along aforesaid mark, S. 81°56' W., 148.50 feet;

THENCE, S. 00°46' W., 61.38 feet;

THENCE, S. 86°52' W., 478.50 feet;

THENCE, N. 80°39' W., 329.34 feet;

THENCE, S. 86°49' W., 389.40 feet;

THENCE, S. 74°53' W., 202.62 feet;

THENCE, S. 30°45' W., 71.94 feet;

THENCE, S. 83°22' W., 186.78 feet;

THENCE, N. 49°38' W., 60.06 feet;

THENCE, N. 86°31' W., 103.62 feet;

THENCE, S. 77°02' W., 473.22 feet;

THENCE, S. 56°58' W., 123.42 feet;

THENCE, S. 07°59' W., 39.60 feet;

THENCE, S. 74°12' W., 399.96 feet;

THENCE, S. 69°06' W., 440.88 feet;

THENCE, S. 66°36' W., 414.48 feet;

THENCE, S. 64°54' W., 435.60 feet;

THENCE, N. 67°06' W., 113.52 feet;

THENCE, S. 58°21' W., 670.56 feet;

THENCE, S. 08°43' W., 66.66 feet;

THENCE, S. 38°12' W., 77.22 feet;

THENCE, S. 58°54' W., 421.74 feet;

THENCE, N. 54°39' W., 74.58 feet;

THENCE, S. 52°39' W., 100.32 feet to the angle point of sections 31 and 32, at the digitized 2003 left bank ordinary high-water mark;

THENCE, S. 00°06' E., along the line between sections 31 and 32, 389.40 feet to the corner of sections 31, 32, 5 and 6;

THENCE, S. 89°56' E., along the line between sections 5 and 32, 1346.40 feet to the angle point of sections 5 and 32, at the digitized 2003 right bank ordinary high-water mark, downstream along said mark ;

THENCE, downstream along aforesaid mark, N. 59°28' E., 281.82 feet;

THENCE, N. 65°05' E., 388.74 feet;

THENCE, S. 89°28' E., 258.06 feet;

THENCE, N. 70°59' E., 276.54 feet;

THENCE, S. 88°01' E., 377.52 feet;

THENCE, N. 81°58' E., 246.18 feet;

THENCE, S. 81°09' E., 161.70 feet;

THENCE, S. 32°57' E., 91.08 feet;

THENCE, N. 77°02' E., 677.16 feet;

THENCE, N. 76°18' E., 226.38 feet;

THENCE, N. 74°23' E., 404.58 feet;

THENCE, N. 84°55' E., 637.56 feet;

THENCE, S. 78°03' E., 88.44 feet to the angle point of sections 32 and 32, at the digitized 2003 right bank ordinary high-water mark ;

THENCE, N. 00°00' W., along the line between sections 32 and 33, 1391.28 feet to the **POINT OF BEGINNING**, containing +/- 143.14 acres.

BASIS OF BEARINGS: As shown on the official BLM plat, approved March 12, 2008, referenced to the true meridian.

Meaning and intending to describe the parcel derived from the Official Bureau of Land Management plats and field notes of the Dependent Resurvey and Survey of the Arkansas River Bed approved March 12, 2008. The purpose of this description is to describe the wet bed areas as shown on the plat. This is exclusively for use by the Arkansas Riverbed Authority and the Choctaw, Chickasaw and Cherokee Nations of Oklahoma. Accuracy and acreages defined by the original survey documentation.

Note: See Exhibit "A" enlargement of the official Bureau of Land Management Plat attached.

David L. Page
DAVID L. PAGE, JR. P.L.S. #1566
8-28-20
DATE SIGNED



EXHIBIT "A"

~BASIS OF BEARING~
As shown on the official BLM plat, approved March 12, 2008, referenced to the true meridian.

LEGAL DESCRIPTION EXHIBIT

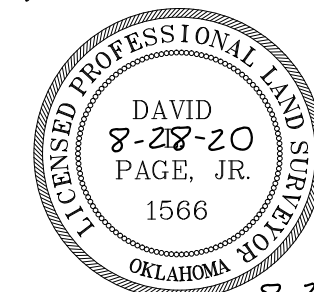
SECTION 31, TOWNSHIP 11 NORTH, RANGE 27 EAST
LEFLORE AND SEQUOYAH COUNTY, STATE OF OKLAHOMA.



124 SOUTH 8th AVENUE
DURANT, OKLAHOMA 74701
(580) 920-9101 OR (580) 239-0176
FAX (580) 920-9121

DAVID L. PAGE JR. © 2020
PROFESSIONAL LAND SURVEYOR #1566
C.A. # 1991, EXPIRES 6-30-2021

Surveyor's Seal



8-28-20
DATE SIGNED

David L. Page
DAVID L. PAGE, JR. P.L.S. #1566

LOCATION
SECTION 31
TOWNSHIP 11 NORTH, RANGE 27 EAST
LEFLORE AND SEQUOYAH COUNTY

GENERAL NOTES

SUBJECT TO EASEMENTS AND/OR RIGHTS-OF-WAY, EITHER RECORDED, OR IMPLIED, THEREOF.
NO UTILITIES OF ANY KIND HAVE BEEN LOCATED EXCEPT THOSE SHOWN ON THE ABOVE PLAT
CONTROLLING CORNERS FOR THIS LEGAL DESCRIPTION ARE AS INDICATED ON THE LOCATION MAP
THIS IS NOT A VALID LEGAL DESCRIPTION WITHOUT THE SURVEYORS ORIGINAL SIGNATURE AND ORIGINAL SEAL
PORTIONS OF THIS PLAT ARE IN COLOR, PHOTO AND ELECTRONIC COPIES OF THIS PLAT MAKE IT INVALID AND MAY ALTER ITS MEANING
THIS EXHIBIT AND LEGAL DESCRIPTION MEETS THE OKLAHOMA MINIMUM STANDARDS FOR THE PRACTICE OF LAND SURVEYING AS ADOPTED BY THE OKLAHOMA STATE BOARD OF LICENSURE FOR PROFESSIONAL ENGINEERS AND LAND SURVEYORS.

NO.	REVISION/ISSUE	DATE

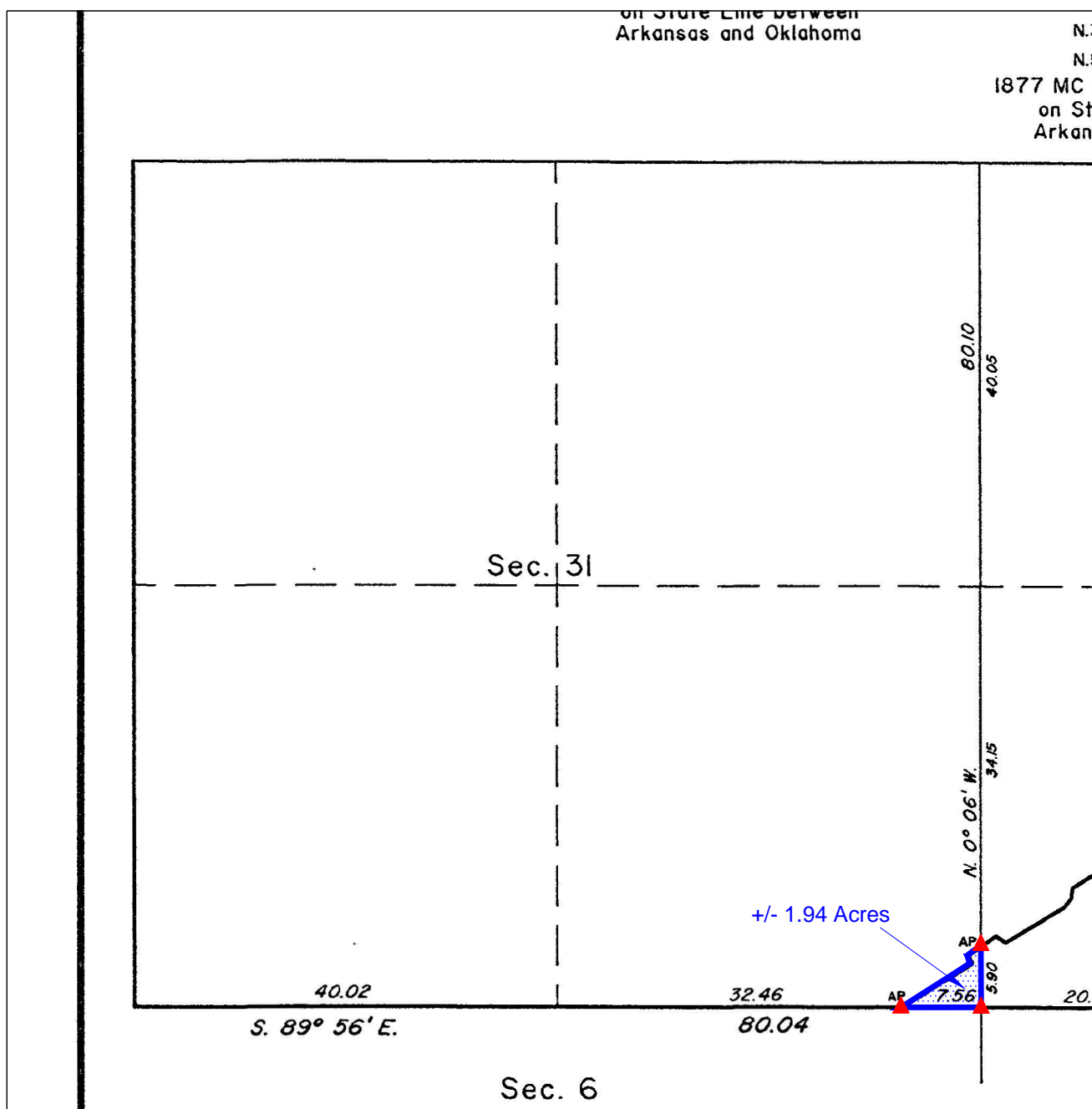
SURVEY INFORMATION	
FIELD WORK PERFORMED:	NONE
DATE OF LAST SITE VISIT:	NONE
EXHIBIT COMPLETED:	8-28-20

Project Name and Address
ARKANSAS RIVER EXHIBIT
SECTION 31, TOWNSHIP 11 NORTH, RANGE 27 EAST
LEFLORE AND SEQUOYAH COUNTY, STATE OF OKLAHOMA.

SCALE
1" = 1000'

SHEET NO.
1 OF 1

DATE
8-28-20



LEGAL DESCRIPTION:

A parcel of land situated in section 31 of township 11 north, range 27 east, Indian Meridian, LeFlore and Sequoyah County, Oklahoma, being the wet bed acres of section 31, and being more particularly described as follows:

BEGINNING at the angle point of sections 31 and 32, at the digitized 2003 left bank ordinary high-water mark, upstream along said mark in section 33;

THENCE, upstream along aforesaid mark, S. 52°26' W., 108.24 feet;

THENCE, S. 18°35' E., 52.14 feet;

THENCE, S. 57°29' W., 508.20 feet to the angle point of sections 6 and 31, at the digitized 2003 left bank ordinary high-water mark;

THENCE, S. 89°56' E., along the line between sections 6 and 31, 498.96 feet to the corner of sections 31,32,5 and 6;

THENCE, N. 0°06' W., along the line between sections 31 and 32, 389.40 feet to the **POINT OF BEGINNING**, containing +/- 1.94 acres.

BASIS OF BEARINGS: As shown on the official BLM plat, approved March 12, 2008, referenced to the true meridian.

Meaning and intending to describe the parcel derived from the Official Bureau of Land Management plats and field notes of the Dependent Resurvey and Survey of the Arkansas River Bed approved March 12, 2008. The purpose of this description is to describe the wet bed areas as shown on the plat. This is exclusively for use by the Arkansas Riverbed Authority and the Choctaw, Chickasaw and Cherokee Nations of Oklahoma. Accuracy and acreages defined by the original survey documentation.

Note: See Exhibit "A" enlargement of the official Bureau of Land Management Plat attached.

David L. Page, Jr. (8/28/20)
LS #1566

SURVEYOR'S SPECIAL NOTE:

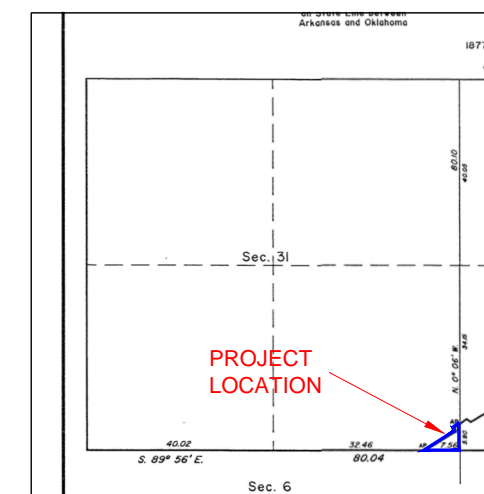
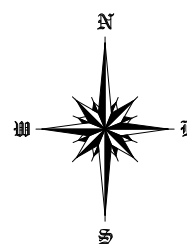
1. MEANING AND INTENDING TO DESCRIBE THE PARCEL DERIVED FROM THE OFFICIAL BUREAU OF LAND MANAGEMENT PLATS AND FIELDNOTES OF THE DEPENDENT RESURVEY AND SURVEY OF THE ARKANSAS RIVER BED APPROVED MARCH 12, 2008. THE PURPOSE OF THIS DESCRIPTION IS TO DESCRIBE THE WET BED AREAS AS SHOWN ON THE PLAT. THIS IS EXCLUSIVELY FOR USE BY THE ARKANSAS RIVERBED AUTHORITY AND THE CHOCTAW, CHICKASAW AND CHEROKEE NATIONS OF OKLAHOMA. ACCURACY AND ACREAGES DEFINED BY THE ORIGINAL SURVEY DOCUMENTATION.

2. THIS IS NOT A BOUNDARY SURVEY AND IS NOT INTENDED TO BE USED AS A BOUNDARY SURVEY. NO FIELD WORK HAS BEEN DONE AND NO MONUMENTS HAVE BEEN VERIFIED.

LEGEND

These standard symbols may be found in the drawing.

- CALCULATED AREA LIMITS
- CALCULATED CORNER (NOTHING SET)



LOCATION MAP

LEGAL DESCRIPTION:

A parcel of land situated in section 31 of township 11 north, range 27 east, Indian Meridian, LeFlore and Sequoyah County, Oklahoma, being the wet bed acres of section 31, and being more particularly described as follows:

BEGINNING at the angle point of sections 31 and 32, at the digitized 2003 left bank ordinary high-water mark, upstream along said mark in section 33;

THENCE, upstream along aforesaid mark, S. 52°26' W., 108.24 feet;

THENCE, S. 18°35' E., 52.14 feet;

THENCE, S. 57°29' W., 508.20 feet to the angle point of sections 6 and 31, at the digitized 2003 left bank ordinary high-water mark;

THENCE, S. 89°56' E., along the line between sections 6 and 31, 498.96 feet to the corner of sections 31,32,5 and 6;

THENCE, N. 0°06' W., along the line between sections 31 and 32, 389.40 feet to the **POINT OF BEGINNING**, containing +/- 1.94 acres.

BASIS OF BEARINGS: As shown on the official BLM plat, approved March 12, 2008, referenced to the true meridian.

Meaning and intending to describe the parcel derived from the Official Bureau of Land Management plats and field notes of the Dependent Resurvey and Survey of the Arkansas River Bed approved March 12, 2008. The purpose of this description is to describe the wet bed areas as shown on the plat. This is exclusively for use by the Arkansas Riverbed Authority and the Choctaw, Chickasaw and Cherokee Nations of Oklahoma. Accuracy and acreages defined by the original survey documentation.

Note: See Exhibit "A" enlargement of the official Bureau of Land Management Plat attached.

David L. Page, Jr. (8/28/20)
LS #1566

David L. Page

DAVID L. PAGE, JR. P.L.S. #1566

8-28-20
DATE SIGNED

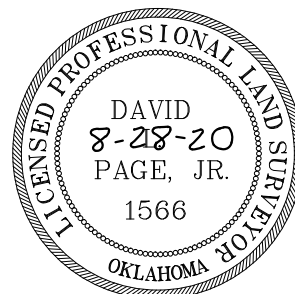


EXHIBIT "A"

~BASIS OF BEARING~
As shown on the official BLM plat, approved March 11, 2009, referenced to the true meridian.

LEGAL DESCRIPTION EXHIBIT

SECTION 5, TOWNSHIP 10 NORTH, RANGE 27 EAST
LEFLORE AND SEQUOYAH COUNTY, STATE OF OKLAHOMA.



124 SOUTH 8th AVENUE
DURANT, OKLAHOMA 74701
(580) 920-9101 OR (580) 239-0176
FAX (580) 920-9121

DAVID L. PAGE JR. © 2020
PROFESSIONAL LAND SURVEYOR #1566
C.A. # 1991, EXPIRES 6-30-2021

Surveyor's Seal



8-28-20
DATE SIGNED

David L. Page
DAVID L. PAGE, JR. P.L.S. #1566

LOCATION
SECTION 5
TOWNSHIP 10 NORTH, RANGE 27 EAST
LEFLORE AND SEQUOYAH COUNTY

GENERAL NOTES

SUBJECT TO EASEMENTS AND/OR RIGHTS-OF-WAY, EITHER RECORDED, OR IMPLIED, THEREOF.
NO UTILITIES OF ANY KIND HAVE BEEN LOCATED EXCEPT THOSE SHOWN ON THE ABOVE PLAT
CONTROLLING CORNERS FOR THIS LEGAL DESCRIPTION ARE AS INDICATED ON THE LOCATION MAP
THIS IS NOT A VALID LEGAL DESCRIPTION WITHOUT THE SURVEYORS ORIGINAL SIGNATURE AND ORIGINAL SEAL
PORTIONS OF THIS PLAT ARE IN COLOR, PHOTO AND ELECTRONIC COPIES OF THIS PLAT MAKE IT INVALID AND MAY ALTER ITS MEANING
THIS EXHIBIT AND LEGAL DESCRIPTION MEETS THE OKLAHOMA MINIMUM STANDARDS FOR THE PRACTICE OF LAND SURVEYING AS ADOPTED BY THE OKLAHOMA STATE BOARD OF LICENSURE FOR PROFESSIONAL ENGINEERS AND LAND SURVEYORS.

NO.	REVISION/ISSUE	DATE

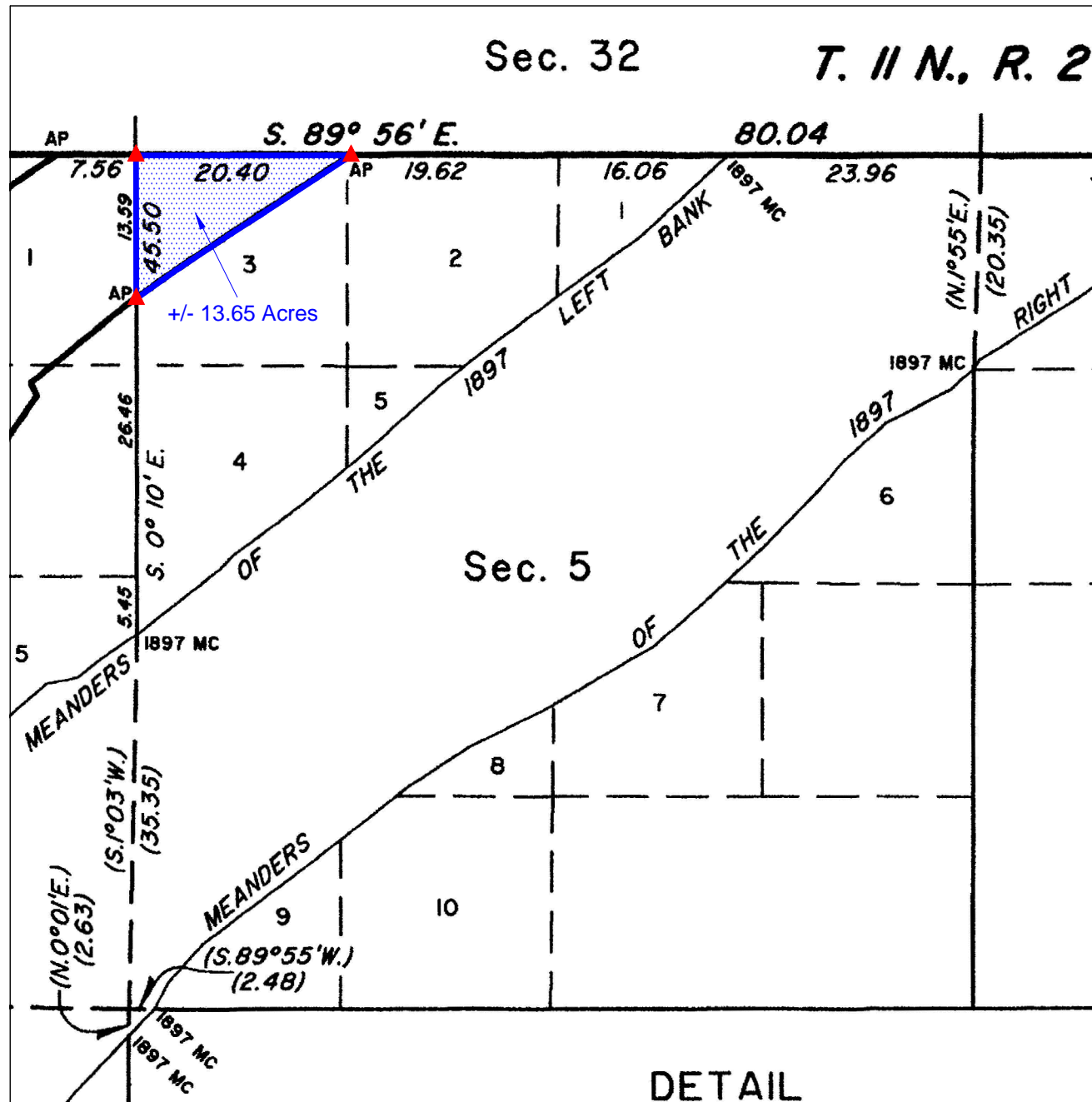
SURVEY INFORMATION	
FIELD WORK PERFORMED:	NONE
DATE OF LAST SITE VISIT:	NONE
EXHIBIT COMPLETED:	8-28-20

Project Name and Address
ARKANSAS RIVER EXHIBIT
SECTION 5, TOWNSHIP 10 NORTH, RANGE 27 EAST
LEFLORE AND SEQUOYAH COUNTY, STATE OF OKLAHOMA.

SCALE
1" = 1000'

SHEET NO.
1 OF 1

DATE
8-28-20



DETAIL

LEGAL DESCRIPTION:

A parcel of land situated in section 5 of township 10 north, range 27 east, Indian Meridian, LeFlore and Sequoyah County, Oklahoma, being the wet bed acres of section 5, and being more particularly described as follows:

BEGINNING at the angle point of sections 5 and 32, at the digitized 2003 right bank ordinary high-water mark, upstream along said mark in section 5;

THENCE, upstream along aforesaid mark, S. 56°43' W., 689.04 feet;

THENCE, S. 57°24' W., 207.24 feet;

THENCE, S. 56°19' W., 401.94 feet;

THENCE, S. 54°35' W., 316.14 feet to the angle point of sections 5 and 6, at the digitized 2003 right bank ordinary high-water mark;

THENCE, N. 00°10' W., along the line between sections 5 and 6, 896.94 feet to the corner of sections 5, 6, 31 and 32;

THENCE, S. 89°56' E., along the line between sections 5 and 32, 1346.40 feet to the **POINT OF BEGINNING**, containing +/- 13.65 acres.

BASIS OF BEARINGS: As shown on the official BLM plat, approved March 11, 2009, referenced to the true meridian.

Meaning and intending to describe the parcel derived from the Official Bureau of Land Management plats and field notes of the Dependent Resurvey and Survey of the Arkansas River Bed approved March 11, 2009. The purpose of this description is to describe the wet bed areas as shown on the plat. This is exclusively for use by the Arkansas Riverbed Authority and the Choctaw, Chickasaw and Cherokee Nations of Oklahoma. Accuracy and acreages defined by the original survey documentation.

Note: See Exhibit "A" enlargement of the official Bureau of Land Management Plat attached.

David L. Page, Jr. (8/28/20)
LS #1566

SURVEYOR'S SPECIAL NOTE:

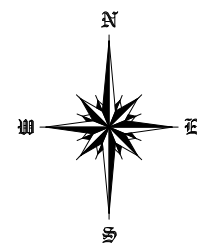
1. MEANING AND INTENDING TO DESCRIBE THE PARCEL DERIVED FROM THE OFFICIAL BUREAU OF LAND MANAGEMENT PLATS AND FIELDNOTES OF THE DEPENDENT RESURVEY AND SURVEY OF THE ARKANSAS RIVER BED APPROVED MARCH 11, 2009. THE PURPOSE OF THIS DESCRIPTION IS TO DESCRIBE THE WET BED AREAS AS SHOWN ON THE PLAT. THIS IS EXCLUSIVELY FOR USE BY THE ARKANSAS RIVERBED AUTHORITY AND THE CHOCTAW, CHICKASAW AND CHEROKEE NATIONS OF OKLAHOMA. ACCURACY AND ACREAGES DEFINED BY THE ORIGINAL SURVEY DOCUMENTATION.

2. THIS IS NOT A BOUNDARY SURVEY AND IS NOT INTENDED TO BE USED AS A BOUNDARY SURVEY. NO FIELD WORK HAS BEEN DONE AND NO MONUMENTS HAVE BEEN VERIFIED.

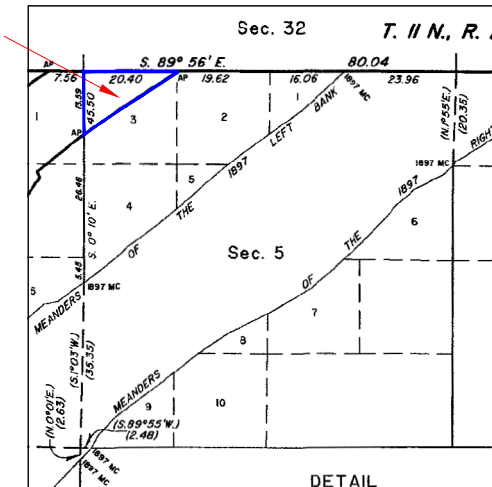
LEGEND

These standard symbols may be found in the drawing.

- CALCULATED AREA LIMITS
- ▲ CALCULATED CORNER (NOTHING SET)



PROJECT LOCATION



LOCATION MAP

LEGAL DESCRIPTION:

A parcel of land situated in section 5 of township 10 north, range 27 east, Indian Meridian, LeFlore and Sequoyah County, Oklahoma, being the wet bed acres of section 5, and being more particularly described as follows:

BEGINNING at the angle point of sections 5 and 32, at the digitized 2003 right bank ordinary high-water mark, upstream along said mark in section 5;

THENCE, upstream along aforesaid mark, S. 56°43' W., 689.04 feet;

THENCE, S. 57°24' W., 207.24 feet;

THENCE, S. 56°19' W., 401.94 feet;

THENCE, S. 54°35' W., 316.14 feet to the angle point of sections 5 and 6, at the digitized 2003 right bank ordinary high-water mark;

THENCE, N. 00°10' W., along the line between sections 5 and 6, 896.94 feet to the corner of sections 5, 6, 31 and 32;

THENCE, S. 89°56' E., along the line between sections 5 and 32, 1346.40 feet to the **POINT OF BEGINNING**, containing +/- 13.65 acres.

BASIS OF BEARINGS: As shown on the official BLM plat, approved March 11, 2009, referenced to the true meridian.

Meaning and intending to describe the parcel derived from the Official Bureau of Land Management plats and field notes of the Dependent Resurvey and Survey of the Arkansas River Bed approved March 11, 2009. The purpose of this description is to describe the wet bed areas as shown on the plat. This is exclusively for use by the Arkansas Riverbed Authority and the Choctaw, Chickasaw and Cherokee Nations of Oklahoma. Accuracy and acreages defined by the original survey documentation.

Note: See Exhibit "A" enlargement of the official Bureau of Land Management Plat attached.

David L. Page, Jr. (8/28/20)
LS #1566

David L. Page

DAVID L. PAGE, JR. P.L.S. #1566

8-28-20
DATE SIGNED



EXHIBIT "A"

~BASIS OF BEARING~
As shown on the official BLM plat, approved March 11, 2009, referenced to the true meridian.

LEGAL DESCRIPTION EXHIBIT

SECTION 6, TOWNSHIP 10 NORTH, RANGE 27 EAST
LEFLORE AND SEQUOYAH COUNTY, STATE OF OKLAHOMA.

LEGAL DESCRIPTION:

A parcel of land situated in section 6 of township 10 north, range 27 east, Indian Meridian, LeFlore and Sequoyah County, Oklahoma, being the wet bed acres of section 6, and being more particularly described as follows:

BEGINNING at the angle point of sections 6 and 31, at the digitized 2003 left bank ordinary high-water mark, upstream along said mark in section 6;

THENCE, upstream along aforesaid mark, S. 56°01' W., 120.78 feet;

THENCE, S. 56°01' W., 192.72 feet;

THENCE, S. 49°59' W., 739.20 feet;

THENCE, S. 50°26' W., 397.98 feet;

THENCE, S. 45°29' W., 591.36 feet;

THENCE, S. 43°44' W., 298.32 feet;

THENCE, S. 42°13' W., 364.98 feet;

THENCE, S. 40°05' W., 711.48 feet;

THENCE, S. 36°51' W., 869.88 feet;

THENCE, S. 34°51' W., 572.22 feet;

THENCE, S. 31°45' W., 228.36 feet;

THENCE, S. 30°34' W., 588.72 feet;

THENCE, S. 24°12' W., 450.12 feet;

THENCE, S. 26°51' W., 731.28 feet to the angle point of sections 6 and 7, at the digitized 2003 left bank ordinary high-water mark;

THENCE, S. 89°57' E., along the line between sections 6 and 7, 1213.08 feet to the angle point of sections 6 and 7, at the digitized 2003 right bank ordinary high-water mark, downstream along said mark in section 6;

THENCE, downstream along aforesaid mark, N. 35°16' E., 733.92 feet;

THENCE, N. 31°25' E., 293.04 feet;

THENCE, N. 30°10' E., 541.86 feet;

THENCE, N. 22°02' E., 75.90 feet;

THENCE, N. 37°13' E., 468.60 feet;

THENCE, N. 38°29' E., 392.70 feet;

THENCE, N. 42°30' E., 872.52 feet;

THENCE, N. 46°01' E., 662.64 feet;

THENCE, N. 38°56' E., 375.54 feet;

THENCE, N. 34°42' E., 370.26 feet;

THENCE, N. 27°37' W., 89.10 feet;

THENCE, N. 50°37' E., 770.22 feet;

THENCE, N. 54°35' E., 78.54 feet to the angle point of sections 5 and 6, at the digitized 2003 right bank ordinary high-water mark;

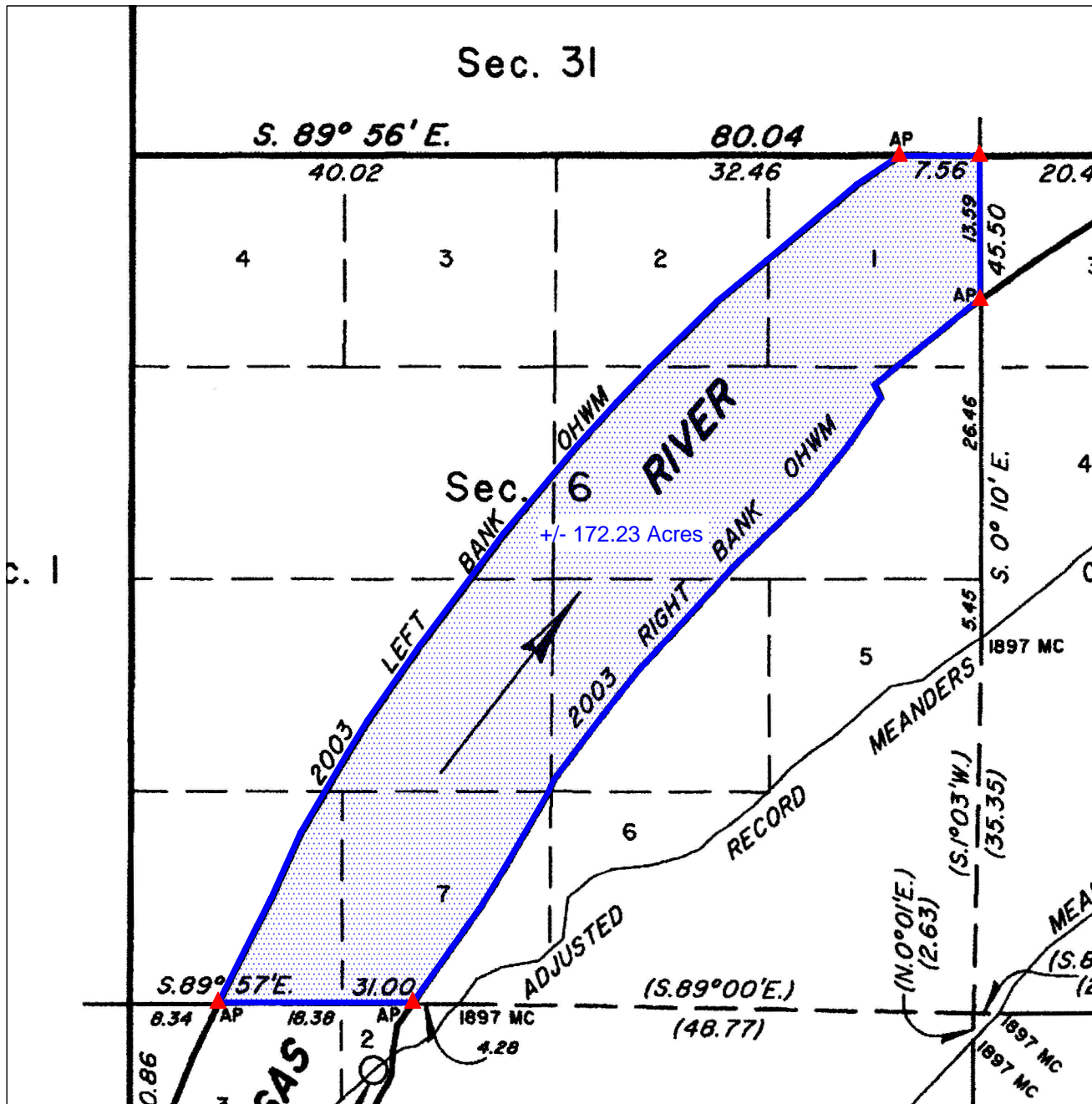
THENCE, N. 00°10' W., along the line between sections 5 and 6, 896.94 feet to the corner of sections 5, 6, 31 and 32;

THENCE, N. 89°56' W., along the line between sections 6 and 31, 498.96 feet to the **POINT OF BEGINNING**, containing +/- 172.23 acres.

BASIS OF BEARINGS: As shown on the official BLM plat, approved March 11, 2009, referenced to the true meridian.

Meaning and intending to describe the parcel derived from the Official Bureau of Land Management plats and field notes of the Dependent Resurvey and Survey of the Arkansas River Bed approved March 11, 2009. The purpose of this description is to describe the wet bed areas as shown on the plat. This is exclusively for use by the Arkansas Riverbed Authority and the Choctaw, Chickasaw and Cherokee Nations of Oklahoma. Accuracy and acreages defined by the original survey documentation.

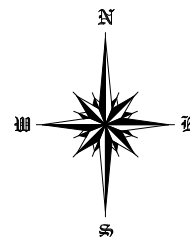
Note: See Exhibit "A" enlargement of the official Bureau of Land Management Plat attached.



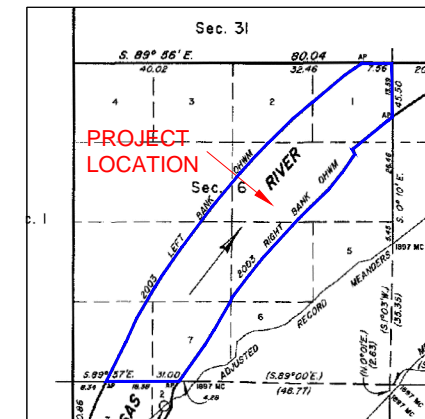
LEGEND

These standard symbols may be found in the drawing.

- CALCULATED AREA LIMITS
- CALCULATED CORNER (NOTHING SET)



David L. Page, Jr. (8/28/20)
LS #1566



LOCATION MAP

SURVEYOR'S SPECIAL NOTE:

1. MEANING AND INTENDING TO DESCRIBE THE PARCEL DERIVED FROM THE OFFICIAL BUREAU OF LAND MANAGEMENT PLATS AND FIELDNOTES OF THE DEPENDENT RESURVEY AND SURVEY OF THE ARKANSAS RIVER BED APPROVED MARCH 11, 2009. THE PURPOSE OF THIS DESCRIPTION IS TO DESCRIBE THE WET BED AREAS AS SHOWN ON THE PLAT. THIS IS EXCLUSIVELY FOR USE BY THE ARKANSAS RIVERBED AUTHORITY AND THE CHOCTAW, CHICKASAW AND CHEROKEE NATIONS OF OKLAHOMA. ACCURACY AND ACREAGES DEFINED BY THE ORIGINAL SURVEY DOCUMENTATION.

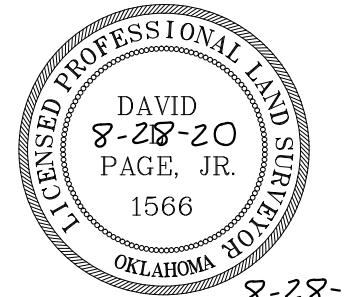
2. THIS IS NOT A BOUNDARY SURVEY AND IS NOT INTENDED TO BE USED AS A BOUNDARY SURVEY. NO FIELD WORK HAS BEEN DONE AND NO MONUMENTS HAVE BEEN VERIFIED.



124 SOUTH 8th AVENUE
DURANT, OKLAHOMA 74701
(580) 920-9101 OR (580) 239-0176
FAX (580) 920-9121

DAVID L. PAGE JR. © 2020
PROFESSIONAL LAND SURVEYOR #1566
C.A. # 1991, EXPIRES 6-30-2021

Surveyor's Seal



8-28-20
DATE SIGNED

David L. Page
DAVID L. PAGE, JR. P.L.S. #1566

LOCATION
SECTION 6
TOWNSHIP 10 NORTH, RANGE 27 EAST
LEFLORE AND SEQUOYAH COUNTY

GENERAL NOTES

SUBJECT TO EASEMENTS AND/OR RIGHTS-OF-WAY, EITHER RECORDED, OR IMPLIED, THEREOF.

NO UTILITIES OF ANY KIND HAVE BEEN LOCATED EXCEPT THOSE SHOWN ON THE ABOVE PLAT

CONTROLLING CORNERS FOR THIS LEGAL DESCRIPTION ARE AS INDICATED ON THE LOCATION MAP

THIS IS NOT A VALID LEGAL DESCRIPTION WITHOUT THE SURVEYORS ORIGINAL SIGNATURE AND ORIGINAL SEAL

PORTIONS OF THIS PLAT ARE IN COLOR. PHOTO AND ELECTRONIC COPIES OF THIS PLAT MAKE IT INVALID AND MAY ALTER ITS MEANING

THIS EXHIBIT AND LEGAL DESCRIPTION MEETS THE OKLAHOMA MINIMUM STANDARDS FOR THE PRACTICE OF LAND SURVEYING AS ADOPTED BY THE OKLAHOMA STATE BOARD OF LICENSURE FOR PROFESSIONAL ENGINEERS AND LAND SURVEYORS.

NO.	REVISION/ISSUE	DATE

SURVEY INFORMATION	
FIELD WORK PERFORMED:	NONE
DATE OF LAST SITE VISIT:	NONE
EXHIBIT COMPLETED:	8-28-20

Project Name and Address
ARKANSAS RIVER EXHIBIT
SECTION 6, TOWNSHIP 10 NORTH, RANGE 27 EAST
LEFLORE AND SEQUOYAH COUNTY, STATE OF OKLAHOMA.

SCALE
1" = 1000'

SHEET NO.
1 OF 1

DATE
8-28-20

LEGAL DESCRIPTION:

A parcel of land situated in section 6 of township 10 north, range 27 east, Indian Meridian, LeFlore and Sequoyah County, Oklahoma, being the wet bed acres of section 6, and being more particularly described as follows:

BEGINNING at the angle point of sections 6 and 31, at the digitized 2003 left bank ordinary high-water mark, upstream along said mark in section 6;

THENCE, upstream along aforesaid mark, S. 56°01' W., 120.78 feet;

THENCE, S. 56°01' W., 192.72 feet;

THENCE, S. 49°59' W., 739.20 feet;

THENCE, S. 50°26' W., 397.98 feet;

THENCE, S. 45°29' W., 591.36 feet;

THENCE, S. 43°44' W., 298.32 feet;

THENCE, S. 42°13' W., 364.98 feet;

THENCE, S. 40°05' W., 711.48 feet;

THENCE, S. 36°51' W., 869.88 feet;

THENCE, S. 34°51' W., 572.22 feet;

THENCE, S. 31°45' W., 228.36 feet;

THENCE, S. 30°34' W., 588.72 feet;

THENCE, S. 24°12' W., 450.12 feet;

THENCE, S. 26°51' W., 731.28 feet to the angle point of sections 6 and 7, at the digitized 2003 left bank ordinary high-water mark;

THENCE, S. 89°57' E., along the line between sections 6 and 7, 1213.08 feet to the angle point of sections 6 and 7, at the digitized 2003 right bank ordinary high-water mark, downstream along said mark in section 6;

THENCE, downstream along aforesaid mark, N. 35°16' E., 733.92 feet;

THENCE, N. 31°25' E., 293.04 feet;

THENCE, N. 30°10' E., 541.86 feet;

THENCE, N. 22°02' E., 75.90 feet;

THENCE, N. 37°13' E., 468.60 feet;

THENCE, N. 38°29' E., 392.70 feet;

THENCE, N. 42°30' E., 872.52 feet;

THENCE, N. 46°01' E., 662.64 feet;

THENCE, N. 38°56' E., 375.54 feet;

THENCE, N. 34°42' E., 370.26 feet;

THENCE, N. 27°37' W., 89.10 feet;

THENCE, N. 50°37' E., 770.22 feet;

THENCE, N. 54°35' E., 78.54 feet to the angle point of sections 5 and 6, at the digitized 2003 right bank ordinary high-water mark;

THENCE, N. 00°10' W., along the line between sections 5 and 6, 896.94 feet to the corner of sections 5, 6, 31 and 32;

THENCE, N. 89°56' W., along the line between sections 6 and 31, 498.96 feet to the **POINT OF BEGINNING**, containing +/- 172.23 acres.

BASIS OF BEARINGS: As shown on the official BLM plat, approved March 11, 2009, referenced to the true meridian.

Meaning and intending to describe the parcel derived from the Official Bureau of Land Management plats and field notes of the Dependent Resurvey and Survey of the Arkansas River Bed approved March 11, 2009. The purpose of this description is to describe the wet bed areas as shown on the plat. This is exclusively for use by the Arkansas Riverbed Authority and the Choctaw, Chickasaw and Cherokee Nations of Oklahoma. Accuracy and acreages defined by the original survey documentation.

Note: See Exhibit "A" enlargement of the official Bureau of Land Management Plat attached.

David L. Page, Jr. (8/28/20)
LS #1566

David L. Page
DAVID L. PAGE, JR. P.L.S. #1566

8-28-20
DATE SIGNED

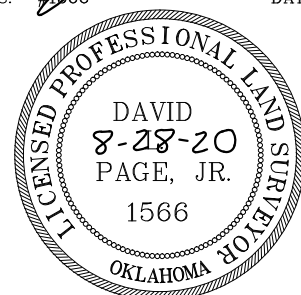
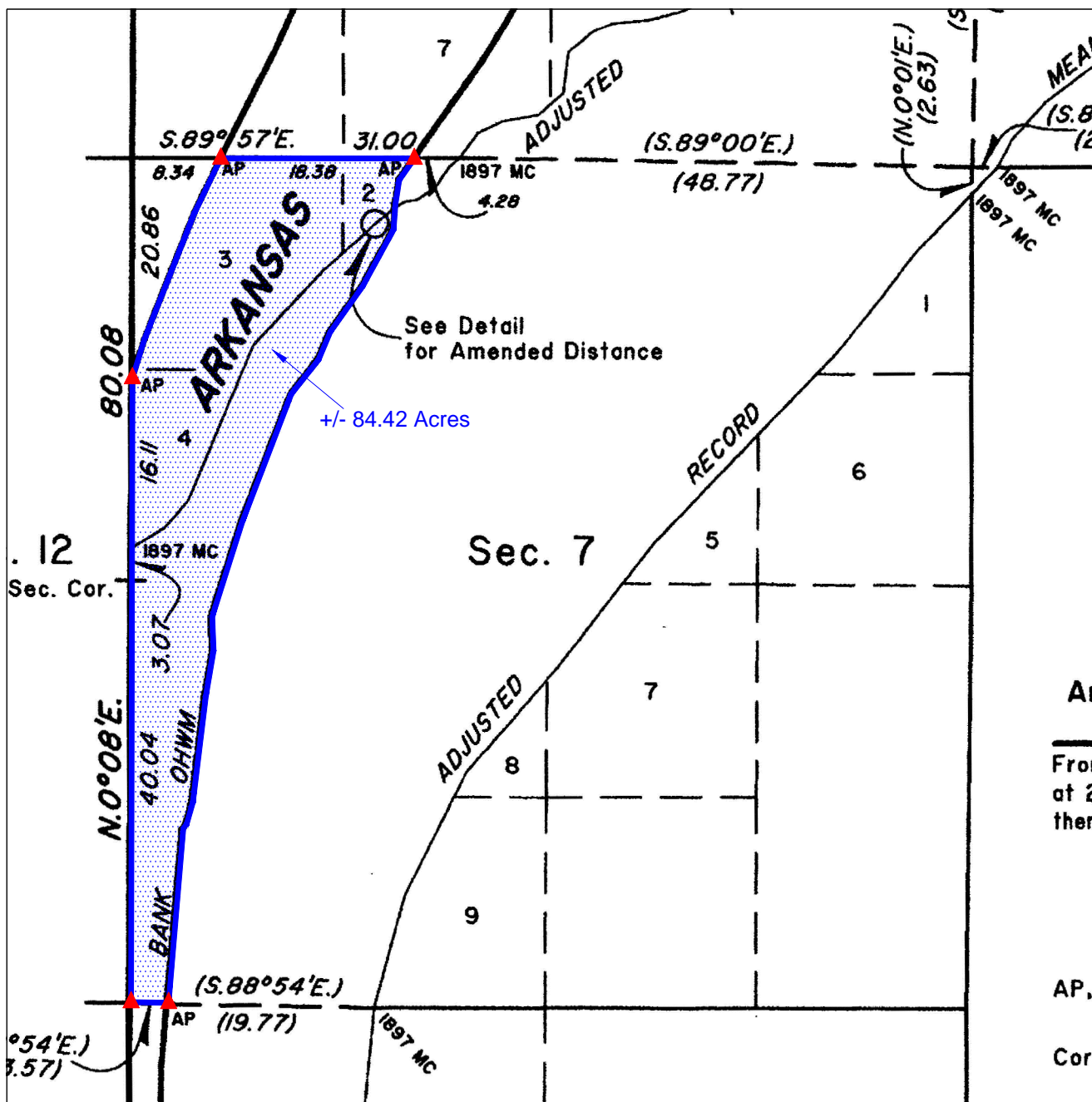


EXHIBIT "A"

~BASIS OF BEARING~
As shown on the official BLM plat, approved March 11, 2009, referenced to the true meridian.

LEGAL DESCRIPTION EXHIBIT

SECTION 7, TOWNSHIP 10 NORTH, RANGE 27 EAST
LEFLORE AND SEQUOYAH COUNTY, STATE OF OKLAHOMA.



LEGAL DESCRIPTION:

A parcel of land situated in section 7 of township 10 north, range 27 east, Indian Meridian, LeFlore and Sequoyah County, Oklahoma, being the wet bed acres of section 7, and being more particularly described as follows:

- BEGINNING** at the angle point of sections 6 and 7, at the digitized 2003 left bank ordinary high-water mark, upstream along said mark in section 7;
- THENCE**, upstream along aforesaid mark, S. 25°50' W., 377.52 feet;
- THENCE**, S. 21°33' W., 851.40 feet;
- THENCE**, S. 17°21' W., 256.08 feet to the angle point of sections 7 and 12, at the digitized 2003 left bank ordinary high-water mark;
- THENCE**, S. 00°08' W., along the line between sections 7 and 12, 3908.52 feet to the corner of sections 7, 12, 13 and 18;
- THENCE**, S. 88°54' E., along the line between sections 7 and 18, 235.62 feet to the angle point of sections 7 and 18, at the digitized 2003 right bank ordinary high-water mark, downstream along said mark in section 7;
- THENCE**, downstream along aforesaid mark, N. 04°52' E., 1096.26 feet;
- THENCE**, N. 35°47' E., 34.98 feet;
- THENCE**, N. 15°46' E., 140.58 feet;
- THENCE**, N. 06°58' E., 671.88 feet;
- THENCE**, N. 09°38' E., 285.78 feet;
- THENCE**, N. 02°07' W., 215.82 feet;
- THENCE**, N. 17°39' E., 625.68 feet;
- THENCE**, N. 21°01' E., 854.04 feet;
- THENCE**, N. 38°27' E., 272.58 feet;
- THENCE**, N. 23°02' E., 189.42 feet;
- THENCE**, N. 35°16' E., 348.48 feet;
- THENCE**, N. 28°41' E., 406.56 feet;
- THENCE**, N. 03°49' E., 159.72 feet;
- THENCE**, N. 09°30' E., 154.44 feet;
- THENCE**, N. 35°16' E., 163.02 feet to the angle point of sections 6 and 7, at the digitized 2003 right bank ordinary high-water mark;
- THENCE**, N. 89°57' W., along the line between sections 6 and 7, 1213.08 feet to the **POINT OF BEGINNING**, containing +/- 84.42 acres.

BASIS OF BEARINGS: As shown on the official BLM plat, approved March 11, 2009, referenced to the true meridian.

Meaning and intending to describe the parcel derived from the Official Bureau of Land Management plats and field notes of the Dependent Resurvey and Survey of the Arkansas River Bed approved March 11, 2009. The purpose of this description is to describe the wet bed areas as shown on the plat. This is exclusively for use by the Arkansas Riverbed Authority and the Choctaw, Chickasaw and Cherokee Nations of Oklahoma. Accuracy and acreages defined by the original survey documentation.

Note: See Exhibit "A" enlargement of the official Bureau of Land Management Plat attached.

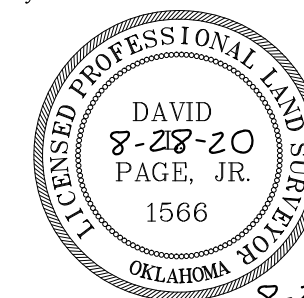
David L. Page, Jr. (8/28/20)
LS #1566



124 SOUTH 8th AVENUE
DURANT, OKLAHOMA 74701
(580) 920-9101 OR (580) 239-0176
FAX (580) 920-9121

DAVID L. PAGE JR. © 2020
PROFESSIONAL LAND SURVEYOR #1566
C.A. # 1991, EXPIRES 6-30-2021

Surveyor's Seal



8-28-20
DATE SIGNED

David L. Page
DAVID L. PAGE, JR. P.L.S. #1566

LOCATION
SECTION 7
TOWNSHIP 10 NORTH, RANGE 27 EAST
LEFLORE AND SEQUOYAH COUNTY

GENERAL NOTES

SUBJECT TO EASEMENTS AND/OR RIGHTS-OF-WAY, EITHER RECORDED, OR IMPLIED, THEREOF.

NO UTILITIES OF ANY KIND HAVE BEEN LOCATED EXCEPT THOSE SHOWN ON THE ABOVE PLAT.

CONTROLLING CORNERS FOR THIS LEGAL DESCRIPTION ARE AS INDICATED ON THE LOCATION MAP.

THIS IS NOT A VALID LEGAL DESCRIPTION WITHOUT THE SURVEYORS ORIGINAL SIGNATURE AND ORIGINAL SEAL.

PORTIONS OF THIS PLAT ARE IN COLOR. PHOTO AND ELECTRONIC COPIES OF THIS PLAT MAKE IT INVALID AND MAY ALTER ITS MEANING.

THIS EXHIBIT AND LEGAL DESCRIPTION MEETS THE OKLAHOMA MINIMUM STANDARDS FOR THE PRACTICE OF LAND SURVEYING AS ADOPTED BY THE OKLAHOMA STATE BOARD OF LICENSURE FOR PROFESSIONAL ENGINEERS AND LAND SURVEYORS.

NO.	REVISION/ISSUE	DATE

SURVEY INFORMATION
FIELD WORK PERFORMED: NONE
DATE OF LAST SITE VISIT: NONE
EXHIBIT COMPLETED: 8-28-20

Project Name and Address
ARKANSAS RIVER EXHIBIT
SECTION 7, TOWNSHIP 10 NORTH, RANGE 27 EAST
LEFLORE AND SEQUOYAH COUNTY, STATE OF OKLAHOMA.

SCALE
1" = 1000'

SHEET NO.
1 OF 1

DATE
8-28-20

SURVEYOR'S SPECIAL NOTE:

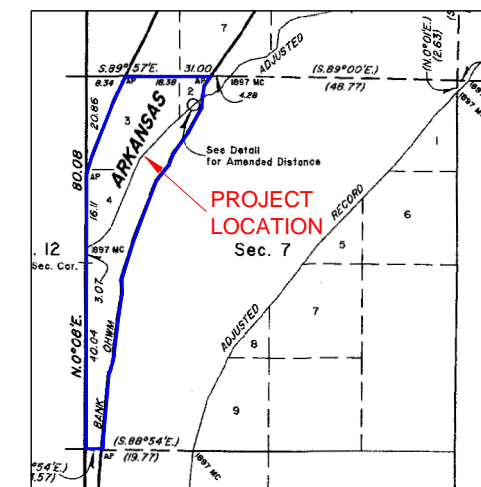
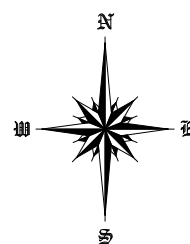
1. MEANING AND INTENDING TO DESCRIBE THE PARCEL DERIVED FROM THE OFFICIAL BUREAU OF LAND MANAGEMENT PLATS AND FIELDNOTES OF THE DEPENDENT RESURVEY AND SURVEY OF THE ARKANSAS RIVER BED APPROVED MARCH 11, 2009. THE PURPOSE OF THIS DESCRIPTION IS TO DESCRIBE THE WET BED AREAS AS SHOWN ON THE PLAT. THIS IS EXCLUSIVELY FOR USE BY THE ARKANSAS RIVERBED AUTHORITY AND THE CHOCTAW, CHICKASAW AND CHEROKEE NATIONS OF OKLAHOMA. ACCURACY AND ACREAGES DEFINED BY THE ORIGINAL SURVEY DOCUMENTATION.

2. THIS IS NOT A BOUNDARY SURVEY AND IS NOT INTENDED TO BE USED AS A BOUNDARY SURVEY. NO FIELD WORK HAS BEEN DONE AND NO MONUMENTS HAVE BEEN VERIFIED.

LEGEND

These standard symbols may be found in the drawing.

- CALCULATED AREA LIMITS
- CALCULATED CORNER (NOTHING SET)



LOCATION MAP

LEGAL DESCRIPTION:

A parcel of land situated in section 7 of township 10 north, range 27 east, Indian Meridian, LeFlore and Sequoyah County, Oklahoma, being the wet bed acres of section 7, and being more particularly described as follows:

BEGINNING at the angle point of sections 6 and 7, at the digitized 2003 left bank ordinary high-water mark, upstream along said mark in section 7;

THENCE, upstream along aforesaid mark, S. 25°50' W., 377.52 feet;

THENCE, S. 21°33' W., 851.40 feet;

THENCE, S. 17°21' W., 256.08 feet to the angle point of sections 7 and 12, at the digitized 2003 left bank ordinary high-water mark;

THENCE, S. 00°08' W., along the line between sections 7 and 12, 3908.52 feet to the corner of sections 7, 12, 13 and 18;

THENCE, S. 88°54' E., along the line between sections 7 and 18, 235.62 feet to the angle point of sections 7 and 18, at the digitized 2003 right bank ordinary high-water mark, downstream along said mark in section 7;

THENCE, downstream along aforesaid mark, N. 04°52' E., 1096.26 feet;

THENCE, N. 35°47' E., 34.98 feet;

THENCE, N. 15°46' E., 140.58 feet;

THENCE, N. 06°58' E., 671.88 feet;

THENCE, N. 09°38' E., 285.78 feet;

THENCE, N. 02°07' W., 215.82 feet;

THENCE, N. 17°39' E., 625.68 feet;

THENCE, N. 21°01' E., 854.04 feet;

THENCE, N. 38°27' E., 272.58 feet;

THENCE, N. 23°02' E., 189.42 feet;

THENCE, N. 35°16' E., 348.48 feet;

THENCE, N. 28°41' E., 406.56 feet;

THENCE, N. 03°49' E., 159.72 feet;

THENCE, N. 09°30' E., 154.44 feet;

THENCE, N. 35°16' E., 163.02 feet to the angle point of sections 6 and 7, at the digitized 2003 right bank ordinary high-water mark;

THENCE, N. 89°57' W., along the line between sections 6 and 7, 1213.08 feet to the **POINT OF BEGINNING**, containing +/- 84.57 acres.

BASIS OF BEARINGS: As shown on the official BLM plat, approved March 11, 2009, referenced to the true meridian.

Meaning and intending to describe the parcel derived from the Official Bureau of Land Management plats and field notes of the Dependent Resurvey and Survey of the Arkansas River Bed approved March 11, 2009. The purpose of this description is to describe the wet bed areas as shown on the plat. This is exclusively for use by the Arkansas Riverbed Authority and the Choctaw, Chickasaw and Cherokee Nations of Oklahoma. Accuracy and acreages defined by the original survey documentation.

Note: See Exhibit "A" enlargement of the official Bureau of Land Management Plat attached.

David L. Page, Jr. (8/28/20)
LS #1566

David L. Page

DAVID L. PAGE, JR. P.L.S. #1566

8-28-20
DATE SIGNED



EXHIBIT "A"

~BASIS OF BEARING~
As shown on the official BLM plat, approved March 11, 2009, referenced to the true meridian.

LEGAL DESCRIPTION EXHIBIT

SECTION 18, TOWNSHIP 10 NORTH, RANGE 27 EAST
LEFLORE AND SEQUOYAH COUNTY, STATE OF OKLAHOMA.



124 SOUTH 8th AVENUE
DURANT, OKLAHOMA 74701
(580) 920-9101 OR (580) 239-0176
FAX (580) 920-9121

DAVID L. PAGE JR. © 2020
PROFESSIONAL LAND SURVEYOR #1566
C.A. # 1991, EXPIRES 6-30-2021

Surveyor's Seal



8-28-20
DATE SIGNED

David L. Page, Jr.
DAVID L. PAGE, JR. P.L.S. #1566

LOCATION
SECTION 18
TOWNSHIP 10 NORTH, RANGE 27 EAST
LEFLORE AND SEQUOYAH COUNTY

GENERAL NOTES

SUBJECT TO EASEMENTS AND/OR RIGHTS-OF-WAY, EITHER RECORDED, OR IMPLIED, THEREOF.
NO UTILITIES OF ANY KIND HAVE BEEN LOCATED EXCEPT THOSE SHOWN ON THE ABOVE PLAT
CONTROLLING CORNERS FOR THIS LEGAL DESCRIPTION ARE AS INDICATED ON THE LOCATION MAP
THIS IS NOT A VALID LEGAL DESCRIPTION WITHOUT THE SURVEYORS ORIGINAL SIGNATURE AND ORIGINAL SEAL
PORTIONS OF THIS PLAT ARE IN COLOR, PHOTO AND ELECTRONIC COPIES OF THIS PLAT MAKE IT INVALID AND MAY ALTER ITS MEANING
THIS EXHIBIT AND LEGAL DESCRIPTION MEETS THE OKLAHOMA MINIMUM STANDARDS FOR THE PRACTICE OF LAND SURVEYING AS ADOPTED BY THE OKLAHOMA STATE BOARD OF LICENSURE FOR PROFESSIONAL ENGINEERS AND LAND SURVEYORS.

NO.	REVISION/ISSUE	DATE

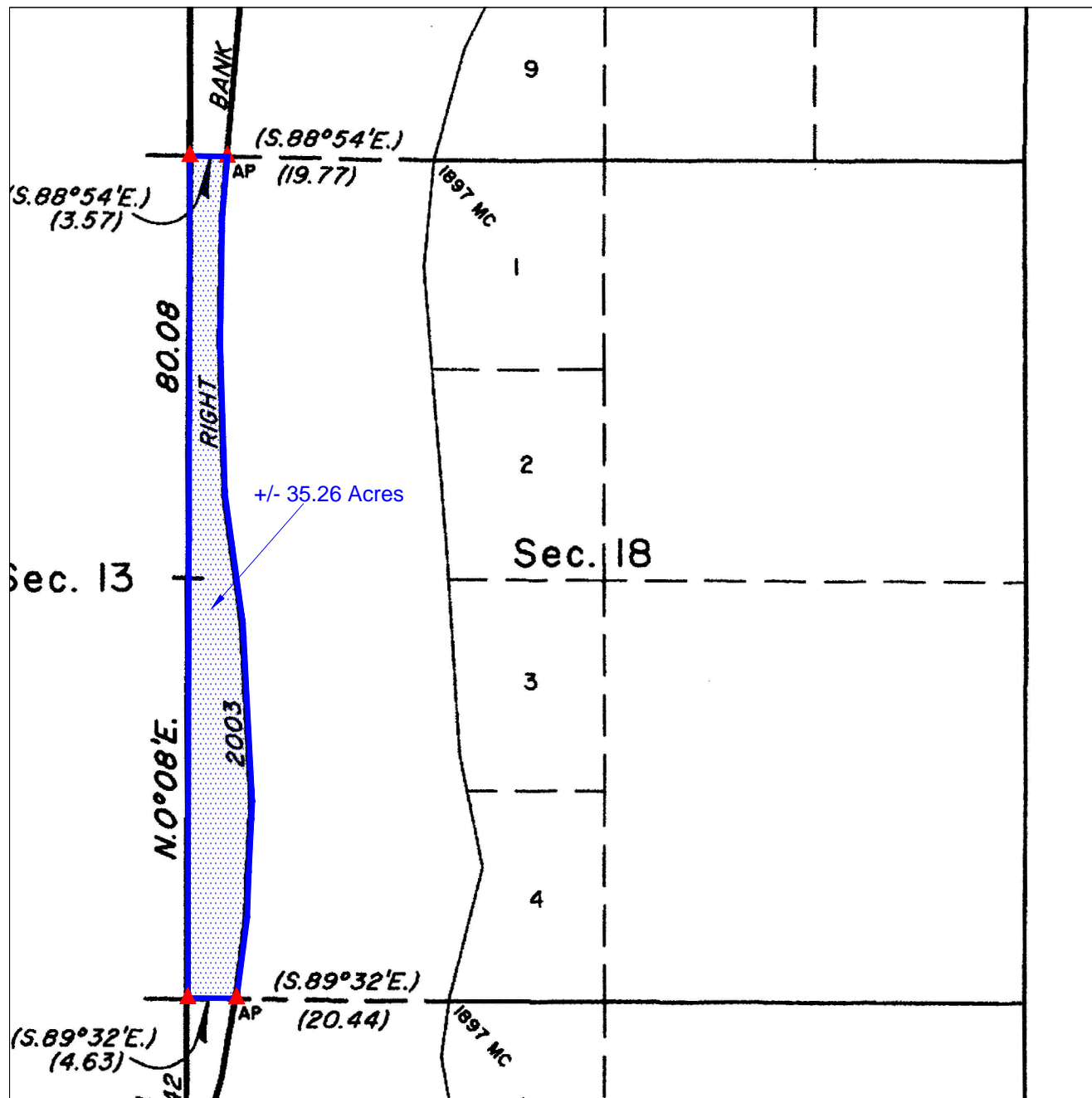
SURVEY INFORMATION	
FIELD WORK PERFORMED:	NONE
DATE OF LAST SITE VISIT:	NONE
EXHIBIT COMPLETED:	8-28-20

Project Name and Address
ARKANSAS RIVER EXHIBIT
SECTION 18, TOWNSHIP 10 NORTH, RANGE 27 EAST
LEFLORE AND SEQUOYAH COUNTY, STATE OF OKLAHOMA.

SCALE 1" = 1000'

SHEET NO. 1 OF 1

DATE 8-28-20



LEGAL DESCRIPTION:

A parcel of land situated in section 18 of township 10 north, range 27 east, Indian Meridian, LeFlore and Sequoyah County, Oklahoma, being the wet bed acres of section 18, and being more particularly described as follows:

BEGINNING at the angle point of sections 7 and 18, at the digitized 2003 right bank ordinary high-water mark, upstream along said mark in section 18;

THENCE, upstream along aforesaid mark, S. 04°52' W., 368.28 feet;

THENCE, S. 00°56' W., 790.02 feet;

THENCE, S. 01°45' E., 956.34 feet;

THENCE, S. 07°52' E., 826.32 feet;

THENCE, S. 03°01' E., 1121.34 feet;

THENCE, S. 02°47' W., 103.62 feet;

THENCE, S. 02°47' W., 339.90 feet;

THENCE, S. 02°04' W., 283.14 feet;

THENCE, S. 07°27' W., 489.72 feet;

THENCE, S. 09°49' W., 21.12 feet to the angle point of sections 18 and 19, at the digitized 2003 right bank ordinary high-water mark;

THENCE, N. 89°32' W., along the line between sections 18 and 19, 305.58 feet to the corner of sections 13, 18, 19, and 24;

THENCE, N. 00°08' E., along the line between sections 13 and 18, 5285.28 feet to the corner of sections 7, 12, 13, and 18;

THENCE, S. 88°54' E., along the line between sections 7 and 18, 235.62 feet to the **POINT OF BEGINNING**, containing +/- 35.26 acres.

BASIS OF BEARINGS: As shown on the official BLM plat, approved March 11, 2009, referenced to the true meridian.

Meaning and intending to describe the parcel derived from the Official Bureau of Land Management plats and field notes of the Dependent Resurvey and Survey of the Arkansas River Bed approved March 11, 2009. The purpose of this description is to describe the wet bed areas as shown on the plat. This is exclusively for use by the Arkansas Riverbed Authority and the Choctaw, Chickasaw and Cherokee Nations of Oklahoma. Accuracy and acreages defined by the original survey documentation.

Note: See Exhibit "A" enlargement of the official Bureau of Land Management Plat attached.

David L. Page, Jr. (8/28/20)
LS #1566

SURVEYOR'S SPECIAL NOTE:

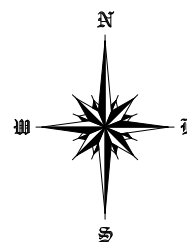
1. MEANING AND INTENDING TO DESCRIBE THE PARCEL DERIVED FROM THE OFFICIAL BUREAU OF LAND MANAGEMENT PLATS AND FIELDNOTES OF THE DEPENDENT RESURVEY AND SURVEY OF THE ARKANSAS RIVER BED APPROVED MARCH 11, 2009. THE PURPOSE OF THIS DESCRIPTION IS TO DESCRIBE THE WET BED AREAS AS SHOWN ON THE PLAT. THIS IS EXCLUSIVELY FOR USE BY THE ARKANSAS RIVERBED AUTHORITY AND THE CHOCTAW, CHICKASAW AND CHEROKEE NATIONS OF OKLAHOMA. ACCURACY AND ACREAGES DEFINED BY THE ORIGINAL SURVEY DOCUMENTATION.

2. THIS IS NOT A BOUNDARY SURVEY AND IS NOT INTENDED TO BE USED AS A BOUNDARY SURVEY. NO FIELD WORK HAS BEEN DONE AND NO MONUMENTS HAVE BEEN VERIFIED.

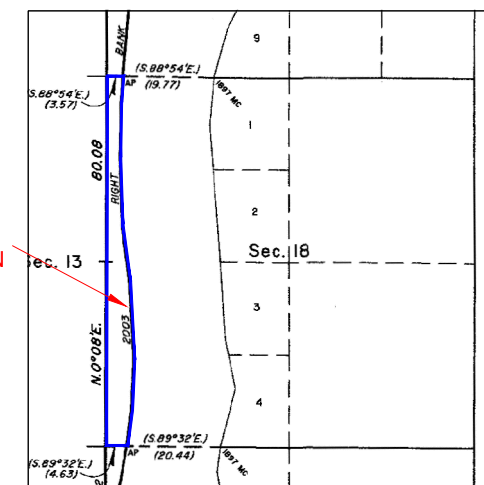
LEGEND

These standard symbols may be found in the drawing.

- CALCULATED AREA LIMITS
- CALCULATED CORNER (NOTHING SET)



PROJECT LOCATION



LOCATION MAP

LEGAL DESCRIPTION:

A parcel of land situated in section 18 of township 10 north, range 27 east, Indian Meridian, LeFlore and Sequoyah County, Oklahoma, being the wet bed acres of section 18, and being more particularly described as follows:

BEGINNING at the angle point of sections 7 and 18, at the digitized 2003 right bank ordinary high-water mark, upstream along said mark in section 18;

THENCE, upstream along aforesaid mark, S. 04°52' W., 368.28 feet;

THENCE, S. 00°56' W., 790.02 feet;

THENCE, S. 01°45' E., 956.34 feet;

THENCE, S. 07°52' E., 826.32 feet;

THENCE, S. 03°01' E., 1121.34 feet;

THENCE, S. 02°47' W., 103.62 feet;

THENCE, S. 02°47' W., 339.90 feet;

THENCE, S. 02°04' W., 283.14 feet;

THENCE, S. 07°27' W., 489.72 feet;

THENCE, S. 09°49' W., 21.12 feet to the angle point of sections 18 and 19, at the digitized 2003 right bank ordinary high-water mark;

THENCE, N. 89°32' W., along the line between sections 18 and 19, 305.58 feet to the corner of sections 13, 18, 19, and 24;

THENCE, N. 00°08' E., along the line between sections 13 and 18, 5285.28 feet to the corner of sections 7, 12, 13, and 18;

THENCE, S. 88°54' E., along the line between sections 7 and 18, 235.62 feet to the **POINT OF BEGINNING**, containing +/- 35.26 acres.

BASIS OF BEARINGS: As shown on the official BLM plat, approved March 11, 2009, referenced to the true meridian.

Meaning and intending to describe the parcel derived from the Official Bureau of Land Management plats and field notes of the Dependent Resurvey and Survey of the Arkansas River Bed approved March 11, 2009. The purpose of this description is to describe the wet bed areas as shown on the plat. This is exclusively for use by the Arkansas Riverbed Authority and the Choctaw, Chickasaw and Cherokee Nations of Oklahoma. Accuracy and acreages defined by the original survey documentation.

Note: See Exhibit "A" enlargement of the official Bureau of Land Management Plat attached.

David L. Page, Jr. (8/28/20)
LS #1566

David L. Page

DAVID L. PAGE, JR. P.L.S. #1566

8-28-20

DATE SIGNED



EXHIBIT "A"

~BASIS OF BEARING~
As shown on the official BLM plat, approved March 11, 2009, referenced to the true meridian.

LEGAL DESCRIPTION EXHIBIT

SECTION 19, TOWNSHIP 10 NORTH, RANGE 27 EAST
LEFLORE AND SEQUOYAH COUNTY, STATE OF OKLAHOMA.



124 SOUTH 8th AVENUE
DURANT, OKLAHOMA 74701
(580) 920-9101 OR (580) 239-0176
FAX (580) 920-9121

DAVID L. PAGE JR. © 2020
PROFESSIONAL LAND SURVEYOR #1566
C.A. # 1991, EXPIRES 6-30-2021

Surveyor's Seal



8-28-20
DATE SIGNED

David L. Page
DAVID L. PAGE, JR. P.L.S. #1566

LOCATION
SECTION 19
TOWNSHIP 10 NORTH, RANGE 27 EAST
LEFLORE AND SEQUOYAH COUNTY

GENERAL NOTES

SUBJECT TO EASEMENTS AND/OR RIGHTS-OF-WAY, EITHER RECORDED, OR IMPLIED, THEREOF.
NO UTILITIES OF ANY KIND HAVE BEEN LOCATED EXCEPT THOSE SHOWN ON THE ABOVE PLAT
CONTROLLING CORNERS FOR THIS LEGAL DESCRIPTION ARE AS INDICATED ON THE LOCATION MAP
THIS IS NOT A VALID LEGAL DESCRIPTION WITHOUT THE SURVEYORS ORIGINAL SIGNATURE AND ORIGINAL SEAL
PORTIONS OF THIS PLAT ARE IN COLOR. PHOTO AND ELECTRONIC COPIES OF THIS PLAT MAKE IT INVALID AND MAY ALTER ITS MEANING
THIS EXHIBIT AND LEGAL DESCRIPTION MEETS THE OKLAHOMA MINIMUM STANDARDS FOR THE PRACTICE OF LAND SURVEYING AS ADOPTED BY THE OKLAHOMA STATE BOARD OF LICENSURE FOR PROFESSIONAL ENGINEERS AND LAND SURVEYORS.

NO.	REVISION/ISSUE	DATE

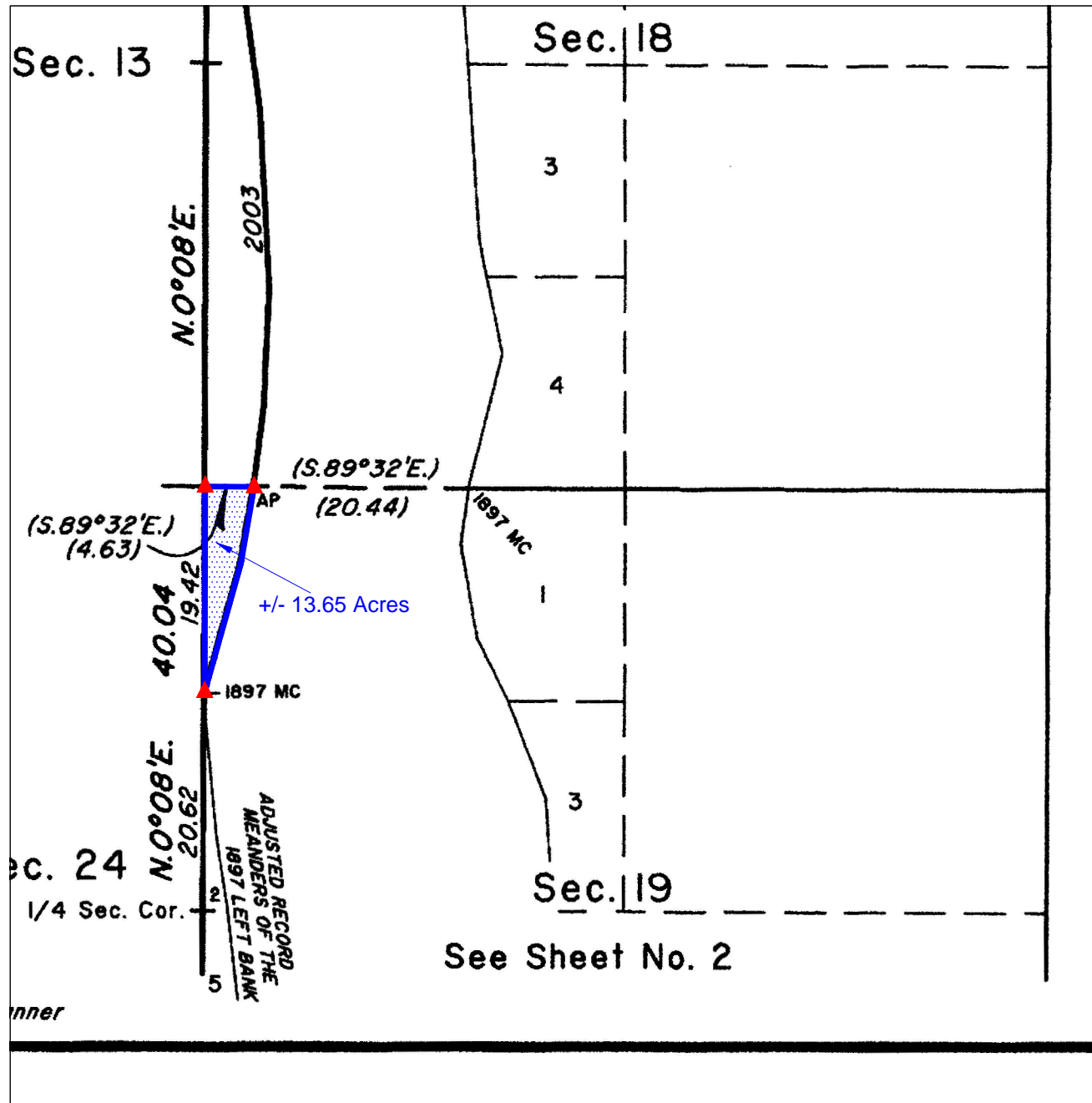
SURVEY INFORMATION	
FIELD WORK PERFORMED:	NONE
DATE OF LAST SITE VISIT:	NONE
EXHIBIT COMPLETED:	8-28-20

Project Name and Address
ARKANSAS RIVER EXHIBIT
SECTION 19, TOWNSHIP 10 NORTH, RANGE 27 EAST
LEFLORE AND SEQUOYAH COUNTY, STATE OF OKLAHOMA.

SCALE 1" = 1000'

SHEET NO. 1 OF 1

DATE 8-28-20



LEGAL DESCRIPTION:

A parcel of land situated in section 19 of township 10 north, range 27 east, Indian Meridian, LeFlore and Sequoyah County, Oklahoma, being the wet bed acres of section 19, and being more particularly described as follows:

BEGINNING at the angle point of sections 18 and 19, at the digitized 2003 right bank ordinary high-water mark, upstream along said mark in section 19;

THENCE, upstream along aforesaid mark, S. 09°49' W., 490.38 feet;

THENCE, S. 15°48' W., 826.98 feet to the 1897 meander corner of sections 19 and 24 ;

THENCE, N. 00°08' E., along the line between sections 19 and 24, 1281.72 feet the corner of sections 13, 18, 19, and 24;

THENCE, S. 89°32' E., along the line between sections 18 and 19, 305.58 feet to the **POINT OF BEGINNING**, containing +/- 4.99 acres.

BASIS OF BEARINGS: As shown on the official BLM plat, approved March 11, 2009, referenced to the true meridian.

Meaning and intending to describe the parcel derived from the Official Bureau of Land Management plats and field notes of the Dependent Resurvey and Survey of the Arkansas River Bed approved March 11, 2009. The purpose of this description is to describe the wet bed areas as shown on the plat. This is exclusively for use by the Arkansas Riverbed Authority and the Choctaw, Chickasaw and Cherokee Nations of Oklahoma. Accuracy and acreages defined by the original survey documentation.

Note: See Exhibit "A" enlargement of the official Bureau of Land Management Plat attached.

David L. Page, Jr. (8/28/20)
LS #1566

SURVEYOR'S SPECIAL NOTE:

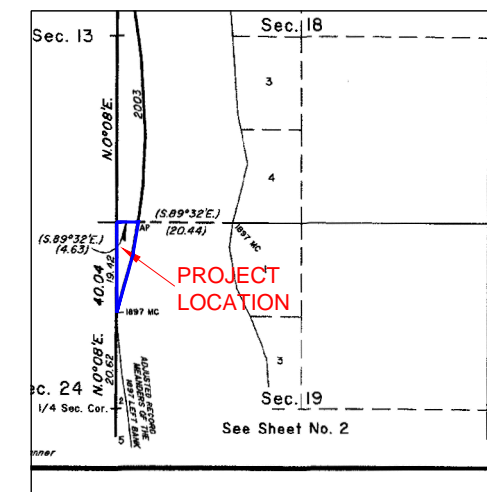
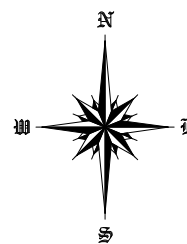
1. MEANING AND INTENDING TO DESCRIBE THE PARCEL DERIVED FROM THE OFFICIAL BUREAU OF LAND MANAGEMENT PLATS AND FIELDNOTES OF THE DEPENDENT RESURVEY AND SURVEY OF THE ARKANSAS RIVER BED APPROVED MARCH 11, 2009. THE PURPOSE OF THIS DESCRIPTION IS TO DESCRIBE THE WET BED AREAS AS SHOWN ON THE PLAT. THIS IS EXCLUSIVELY FOR USE BY THE ARKANSAS RIVERBED AUTHORITY AND THE CHOCTAW, CHICKASAW AND CHEROKEE NATIONS OF OKLAHOMA. ACCURACY AND ACREAGES DEFINED BY THE ORIGINAL SURVEY DOCUMENTATION.

2. THIS IS NOT A BOUNDARY SURVEY AND IS NOT INTENDED TO BE USED AS A BOUNDARY SURVEY. NO FIELD WORK HAS BEEN DONE AND NO MONUMENTS HAVE BEEN VERIFIED.

LEGEND

These standard symbols may be found in the drawing.

- CALCULATED AREA LIMITS
- CALCULATED CORNER (NOTHING SET)



LOCATION MAP

LEGAL DESCRIPTION:

A parcel of land situated in section 19 of township 10 north, range 27 east, Indian Meridian, LeFlore and Sequoyah County, Oklahoma, being the wet bed acres of section 19, and being more particularly described as follows:

BEGINNING at the angle point of sections 18 and 19, at the digitized 2003 right bank ordinary high-water mark, upstream along said mark in section 19;

THENCE, upstream along aforesaid mark, S. 09°49' W., 490.38 feet;

THENCE, S. 15°48' W., 826.98 feet to the 1897 meander corner of sections 19 and 24 ;

THENCE, N. 00°08' E., along the line between sections 19 and 24, 1281.72 feet the corner of sections 13, 18, 19, and 24;

THENCE, S. 89°32' E., along the line between sections 18 and 19, 305.58 feet to the **POINT OF BEGINNING**, containing +/- 4.99 acres.

BASIS OF BEARINGS: As shown on the official BLM plat, approved March 11, 2009, referenced to the true meridian.

Meaning and intending to describe the parcel derived from the Official Bureau of Land Management plats and field notes of the Dependent Resurvey and Survey of the Arkansas River Bed approved March 11, 2009. The purpose of this description is to describe the wet bed areas as shown on the plat. This is exclusively for use by the Arkansas Riverbed Authority and the Choctaw, Chickasaw and Cherokee Nations of Oklahoma. Accuracy and acreages defined by the original survey documentation.

Note: See Exhibit "A" enlargement of the official Bureau of Land Management Plat attached.

David L. Page, Jr. (8/28/20)
LS #1566

David L. Page
DAVID L. PAGE, JR. P.L.S. #1566

8-28-20
DATE SIGNED



EXHIBIT "A"

~BASIS OF BEARING~
As shown on the official BLM plat, approved
October 2, 2008, referenced to the true meridian.

LEGAL DESCRIPTION EXHIBIT

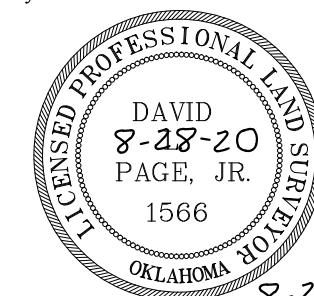
SECTION 12, TOWNSHIP 10 NORTH, RANGE 26 EAST
LEFLORE AND SEQUOYAH COUNTY, STATE OF OKLAHOMA.



124 SOUTH 8th AVENUE
DURANT, OKLAHOMA 74701
(580) 920-9101 OR (580) 239-0176
FAX (580) 920-9121

DAVID L. PAGE JR. © 2020
PROFESSIONAL LAND SURVEYOR #1566
C.A. # 1991, EXPIRES 6-30-2021

Surveyor's Seal



8-28-20
DATE SIGNED

David L. Page
DAVID L. PAGE, JR. P.L.S. #1566

LOCATION
SECTION 12
TOWNSHIP 10 NORTH, RANGE 26 EAST
LEFLORE AND SEQUOYAH COUNTY

GENERAL NOTES

SUBJECT TO EASEMENTS AND/OR RIGHTS-OF-WAY, EITHER RECORDED, OR IMPLIED, THEREOF.

NO UTILITIES OF ANY KIND HAVE BEEN LOCATED EXCEPT THOSE SHOWN ON THE ABOVE PLAT

CONTROLLING CORNERS FOR THIS LEGAL DESCRIPTION ARE AS INDICATED ON THE LOCATION MAP

THIS IS NOT A VALID LEGAL DESCRIPTION WITHOUT THE SURVEYORS ORIGINAL SIGNATURE AND ORIGINAL SEAL

PORTIONS OF THIS PLAT ARE IN COLOR. PHOTO AND ELECTRONIC COPIES OF THIS PLAT MAKE IT INVALID AND MAY ALTER ITS MEANING

THIS EXHIBIT AND LEGAL DESCRIPTION MEETS THE OKLAHOMA MINIMUM STANDARDS FOR THE PRACTICE OF LAND SURVEYING AS ADOPTED BY THE OKLAHOMA STATE BOARD OF LICENSURE FOR PROFESSIONAL ENGINEERS AND LAND SURVEYORS.

NO.	REVISION/ISSUE	DATE

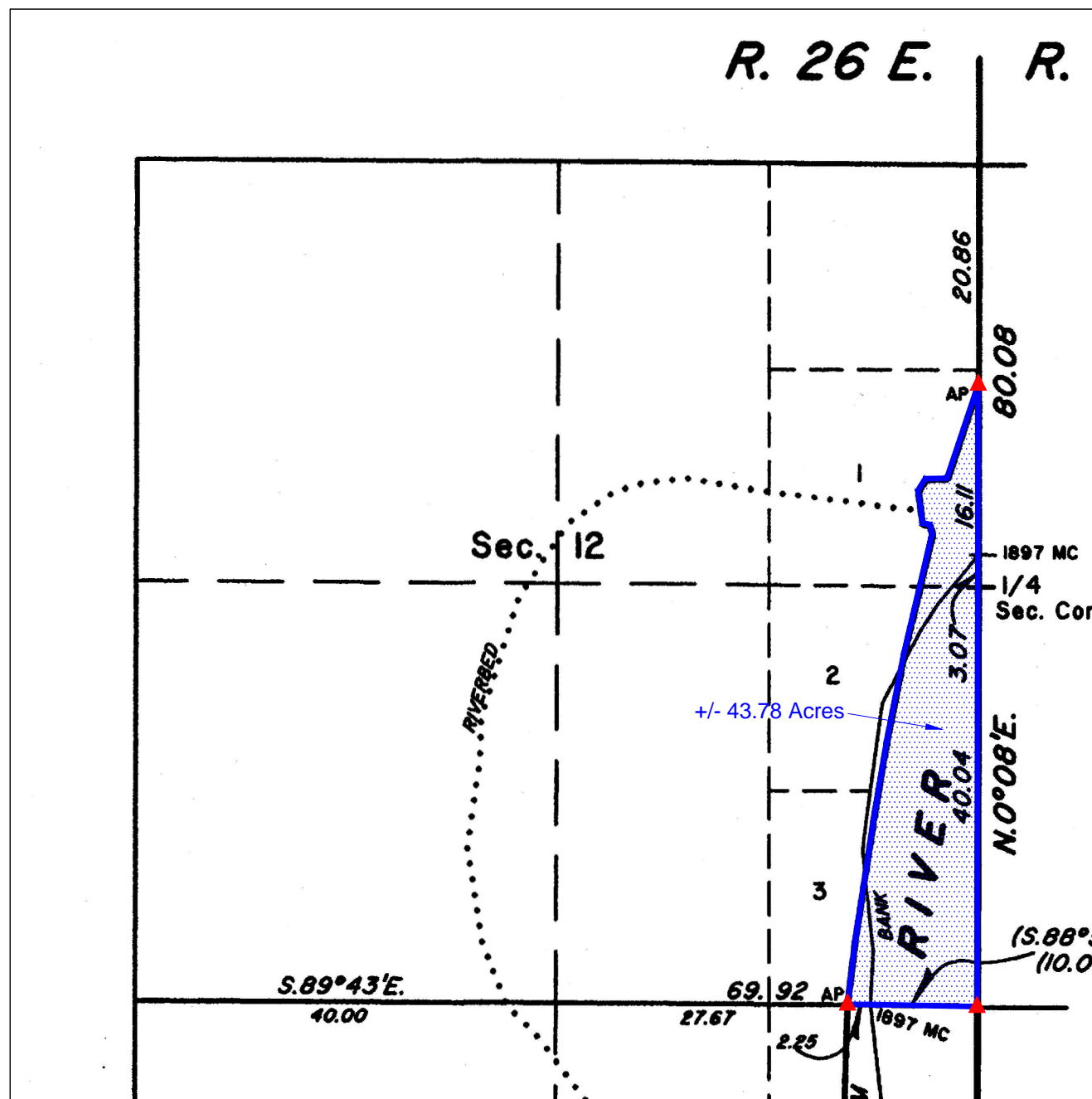
SURVEY INFORMATION	
FIELD WORK PERFORMED:	NONE
DATE OF LAST SITE VISIT:	NONE
EXHIBIT COMPLETED:	8-28-20

Project Name and Address
ARKANSAS RIVER EXHIBIT
SECTION 12, TOWNSHIP 10 NORTH, RANGE 26 EAST
LEFLORE AND SEQUOYAH COUNTY, STATE OF OKLAHOMA.

SCALE 1" = 1000'

SHEET NO. 1 OF 1

DATE 8-28-20



LEGAL DESCRIPTION:

A parcel of land situated in section 12 of township 10 north, range 26 east, Indian Meridian, LeFlore and Sequoyah County, Oklahoma, being the wet bed acres of section 12, and being more particularly described as follows:

BEGINNING at the angle point of sections 7 and 12, at the digitized 2003 left bank ordinary high-water mark, upstream along said mark in section 12;

THENCE, upstream along aforesaid mark, S. 18°29' W., 621.06 feet;

THENCE, S. 89°02' W., 135.96 feet;

THENCE, S. 31°25' W., 87.96 feet;

THENCE, S. 07°44' E., 100.32 feet;

THENCE, S. 07°44' E., 104.94 feet;

THENCE, S. 79°24' E., 46.20 feet;

THENCE, S. 14°18' E., 60.72 feet;

THENCE, S. 13°17' W., 760.98 feet;

THENCE, S. 11°07' W., 566.28 feet;

THENCE, S. 09°32' W., 444.84 feet;

THENCE, S. 08°41' W., 833.58 feet;

THENCE, S. 06°44' W., 399.30 feet to the angle point of sections 12 and 13, at the digitized 2003 left bank ordinary high-water mark;

THENCE, S. 89°43' E., along the line between sections 12 and 13, 148.50 feet to the 1897 meander corner of sections 12 and 13;

THENCE, S. 88°51' E., along the line between sections 12 and 13, 644.62 feet to the corner of sections 7, 12, 13 and 18;

THENCE, N. 00°08' E., along the line between sections 7 and 12, 3908.52 feet to the **POINT OF BEGINNING**, containing +/- 43.78 acres.

BASIS OF BEARINGS: As shown on the official BLM plat, approved October 2, 2008, referenced to the true meridian.

Meaning and intending to describe the parcel derived from the Official Bureau of Land Management plats and field notes of the Dependent Resurvey and Survey of the Arkansas River Bed approved October 2, 2008. The purpose of this description is to describe the wet bed areas as shown on the plat. This is exclusively for use by the Arkansas Riverbed Authority and the Choctaw, Chickasaw and Cherokee Nations of Oklahoma. Accuracy and acreages defined by the original survey documentation.

Note: See Exhibit "A" enlargement of the official Bureau of Land Management Plat attached.

David L. Page, Jr. (8/28/20)
LS #1566

SURVEYOR'S SPECIAL NOTE:

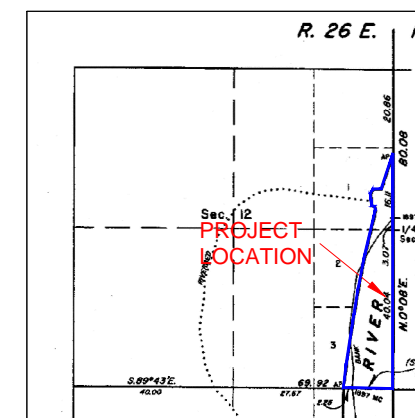
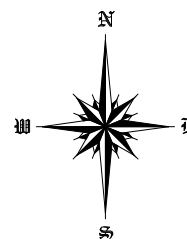
1. MEANING AND INTENDING TO DESCRIBE THE PARCEL DERIVED FROM THE OFFICIAL BUREAU OF LAND MANAGEMENT PLATS AND FIELDNOTES OF THE DEPENDENT RESURVEY AND SURVEY OF THE ARKANSAS RIVER BED APPROVED OCTOBER 2, 2008. THE PURPOSE OF THIS DESCRIPTION IS TO DESCRIBE THE WET BED AREAS AS SHOWN ON THE PLAT. THIS IS EXCLUSIVELY FOR USE BY THE ARKANSAS RIVERBED AUTHORITY AND THE CHOCTAW, CHICKASAW AND CHEROKEE NATIONS OF OKLAHOMA. ACCURACY AND ACREAGES DEFINED BY THE ORIGINAL SURVEY DOCUMENTATION.

2. THIS IS NOT A BOUNDARY SURVEY AND IS NOT INTENDED TO BE USED AS A BOUNDARY SURVEY. NO FIELD WORK HAS BEEN DONE AND NO MONUMENTS HAVE BEEN VERIFIED.

LEGEND

These standard symbols may be found in the drawing.

- CALCULATED AREA LIMITS
- ▲ CALCULATED CORNER (NOTHING SET)



LOCATION MAP

LEGAL DESCRIPTION:

A parcel of land situated in section 12 of township 10 north, range 26 east, Indian Meridian, LeFlore and Sequoyah County, Oklahoma, being the wet bed acres of section 12, and being more particularly described as follows:

BEGINNING at the angle point of sections 7 and 12, at the digitized 2003 left bank ordinary high-water mark, upstream along said mark in section 12;

THENCE, upstream along aforesaid mark, S. 18°29' W., 621.06 feet;

THENCE, S. 89°02' W., 135.96 feet;

THENCE, S. 31°25' W., 87.96 feet;

THENCE, S. 07°44' E., 100.32 feet;

THENCE, S. 07°44' E., 104.94 feet;

THENCE, S. 79°24' E., 46.20 feet;

THENCE, S. 14°18' E., 60.72 feet;

THENCE, S. 13°17' W., 760.98 feet;

THENCE, S. 11°07' W., 566.28 feet;

THENCE, S. 09°32' W., 444.84 feet;

THENCE, S. 08°41' W., 833.58 feet;

THENCE, S. 06°44' W., 399.30 feet to the angle point of sections 12 and 13, at the digitized 2003 left bank ordinary high-water mark;

THENCE, S. 89°43' E., along the line between sections 12 and 13, 148.50 feet to the 1897 meander corner of sections 12 and 13;

THENCE, S. 88°51' E., along the line between sections 12 and 13, 644.62 feet to the corner of sections 7, 12, 13 and 18;

THENCE, N. 00°08' E., along the line between sections 7 and 12, 3908.52 feet to the **POINT OF BEGINNING**, containing +/- 43.78 acres.

BASIS OF BEARINGS: As shown on the official BLM plat, approved October 2, 2008, referenced to the true meridian.

Meaning and intending to describe the parcel derived from the Official Bureau of Land Management plats and field notes of the Dependent Resurvey and Survey of the Arkansas River Bed approved October 2, 2008. The purpose of this description is to describe the wet bed areas as shown on the plat. This is exclusively for use by the Arkansas Riverbed Authority and the Choctaw, Chickasaw and Cherokee Nations of Oklahoma. Accuracy and acreages defined by the original survey documentation.

Note: See Exhibit "A" enlargement of the official Bureau of Land Management Plat attached.

David L. Page, Jr. (8/28/20)
LS #1566

David L. Page Jr.
DAVID L. PAGE, JR. P.L.S. #1566
8-28-20
DATE SIGNED

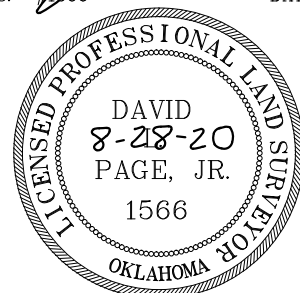


EXHIBIT "A"

~BASIS OF BEARING~
As shown on the official BLM plat, approved
October 2, 2008, referenced to the true meridian.

LEGAL DESCRIPTION EXHIBIT

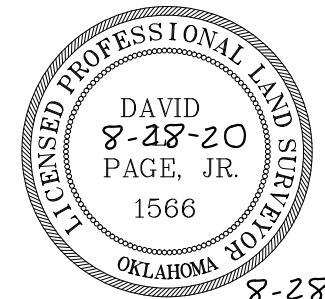
SECTION 13, TOWNSHIP 10 NORTH, RANGE 26 EAST
LEFLORE AND SEQUOYAH COUNTY, STATE OF OKLAHOMA.



124 SOUTH 8th AVENUE
DURANT, OKLAHOMA 74701
(580) 920-9101 OR (580) 239-0176
FAX (580) 920-9121

DAVID L. PAGE JR. © 2020
PROFESSIONAL LAND SURVEYOR #1566
C.A. # 1991, EXPIRES 6-30-2021

Surveyor's Seal



8-28-20
DATE SIGNED

David L. Page
DAVID L. PAGE, JR. P.L.S. #1566

LOCATION
SECTION 13
TOWNSHIP 10 NORTH, RANGE 26 EAST
LEFLORE AND SEQUOYAH COUNTY

GENERAL NOTES

SUBJECT TO EASEMENTS AND/OR RIGHTS-OF-WAY, EITHER RECORDED, OR IMPLIED, THEREOF.
NO UTILITIES OF ANY KIND HAVE BEEN LOCATED EXCEPT THOSE SHOWN ON THE ABOVE PLAT
CONTROLLING CORNERS FOR THIS LEGAL DESCRIPTION ARE AS INDICATED ON THE LOCATION MAP
THIS IS NOT A VALID LEGAL DESCRIPTION WITHOUT THE SURVEYORS ORIGINAL SIGNATURE AND ORIGINAL SEAL
PORTIONS OF THIS PLAT ARE IN COLOR, PHOTO AND ELECTRONIC COPIES OF THIS PLAT MAKE IT INVALID AND MAY ALTER ITS MEANING
THIS EXHIBIT AND LEGAL DESCRIPTION MEETS THE OKLAHOMA MINIMUM STANDARDS FOR THE PRACTICE OF LAND SURVEYING AS ADOPTED BY THE OKLAHOMA STATE BOARD OF LICENSURE FOR PROFESSIONAL ENGINEERS AND LAND SURVEYORS.

NO.	REVISION/ISSUE	DATE

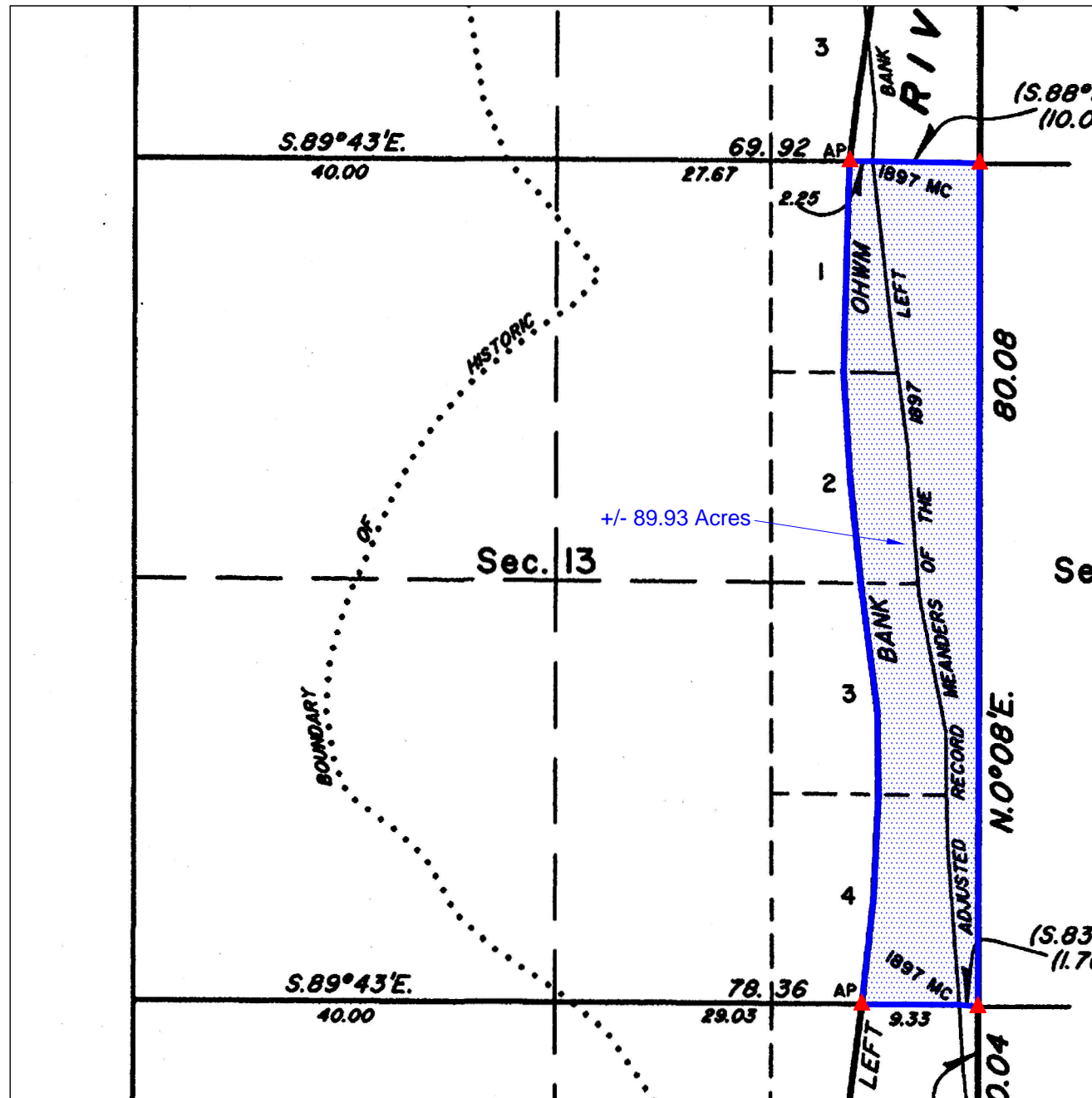
SURVEY INFORMATION	
FIELD WORK PERFORMED:	NONE
DATE OF LAST SITE VISIT:	NONE
EXHIBIT COMPLETED:	8-28-20

Project Name and Address
ARKANSAS RIVER EXHIBIT
SECTION 13, TOWNSHIP 10 NORTH, RANGE 26 EAST
LEFLORE AND SEQUOYAH COUNTY, STATE OF OKLAHOMA.

SCALE 1" = 1000'

SHEET NO. 1 OF 1

DATE 8-28-20



LEGAL DESCRIPTION:

A parcel of land situated in section 13 of township 10 north, range 26 east, Indian Meridian, LeFlore and Sequoyah County, Oklahoma, being the wet bed acres of section 13, and being more particularly described as follows:

BEGINNING at the angle point of sections 12 and 13, at the digitized 2003 left bank ordinary high-water mark, upstream along said mark in section 13;

THENCE, upstream along aforesaid mark, S. 02°42' W., 211.86 feet;

THENCE, S. 01°33' W., 1118.04 feet;

THENCE, S. 03°33' E., 677.82 feet;

THENCE, S. 05°49' E., 648.78 feet;

THENCE, S. 07°25' E., 802.56 feet;

THENCE, S. 00°42' E., 526.02 feet;

THENCE, S. 02°41' W., 644.82 feet;

THENCE, S. 06°18' W., 670.56 feet to the angle point of sections 13 and 24, at the digitized 2003 left bank ordinary high-water mark;

THENCE, S. 89°43' E., along the line between sections 13 and 24, 615.78 feet to the 1897 meander corner of sections 13 and 24;

THENCE, S. 83°46' E., along the line between sections 13 and 24, 112.20 feet to the corner of sections 13, 18, 19 and 24;

THENCE, N. 00°08' E., along the line between sections 13 and 18, 5285.28 feet to the corner of sections 7, 12, 13 and 18;

THENCE, N. 88°51' W., along the line between sections 12 and 13, 664.62 feet to the 1897 meander corner of sections 12 and 13;

THENCE, N. 89°43' W., along the line between sections 12 and 13, 148.50 feet to the **POINT OF BEGINNING**, containing +/- 89.93 acres.

BASIS OF BEARINGS: As shown on the official BLM plat, approved October 2, 2008, referenced to the true meridian.

Meaning and intending to describe the parcel derived from the Official Bureau of Land Management plats and field notes of the Dependent Resurvey and Survey of the Arkansas River Bed approved October 2, 2008. The purpose of this description is to describe the wet bed areas as shown on the plat. This is exclusively for use by the Arkansas Riverbed Authority and the Choctaw, Chickasaw and Cherokee Nations of Oklahoma. Accuracy and acreages defined by the original survey documentation.

Note: See Exhibit "A" enlargement of the official Bureau of Land Management Plat attached.

David L. Page, Jr. (8/28/20)
LS #1566

SURVEYOR'S SPECIAL NOTE:

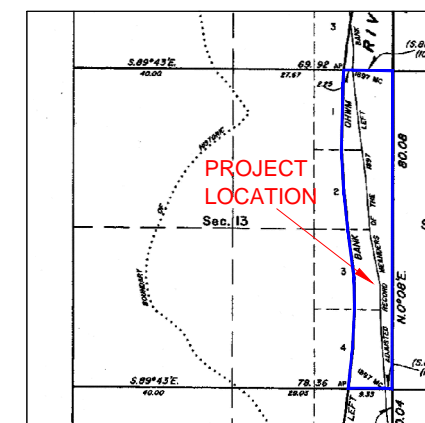
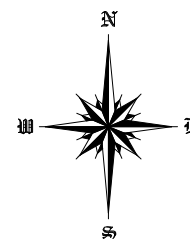
1. MEANING AND INTENDING TO DESCRIBE THE PARCEL DERIVED FROM THE OFFICIAL BUREAU OF LAND MANAGEMENT PLATS AND FIELDNOTES OF THE DEPENDENT RESURVEY AND SURVEY OF THE ARKANSAS RIVER BED APPROVED OCTOBER 2, 2008. THE PURPOSE OF THIS DESCRIPTION IS TO DESCRIBE THE WET BED AREAS AS SHOWN ON THE PLAT. THIS IS EXCLUSIVELY FOR USE BY THE ARKANSAS RIVERBED AUTHORITY AND THE CHOCTAW, CHICKASAW AND CHEROKEE NATIONS OF OKLAHOMA. ACCURACY AND ACREAGES DEFINED BY THE ORIGINAL SURVEY DOCUMENTATION.

2. THIS IS NOT A BOUNDARY SURVEY AND IS NOT INTENDED TO BE USED AS A BOUNDARY SURVEY. NO FIELD WORK HAS BEEN DONE AND NO MONUMENTS HAVE BEEN VERIFIED.

LEGEND

These standard symbols may be found in the drawing.

- CALCULATED AREA LIMITS
- CALCULATED CORNER (NOTHING SET)



LOCATION MAP

LEGAL DESCRIPTION:

A parcel of land situated in section 13 of township 10 north, range 26 east, Indian Meridian, LeFlore and Sequoyah County, Oklahoma, being the wet bed acres of section 13, and being more particularly described as follows:

BEGINNING at the angle point of sections 12 and 13, at the digitized 2003 left bank ordinary high-water mark, upstream along said mark in section 13;

THENCE, upstream along aforesaid mark, S. 02°42' W., 211.86 feet;

THENCE, S. 01°33' W., 1118.04 feet;

THENCE, S. 03°33' E., 677.82 feet;

THENCE, S. 05°49' E., 648.78 feet;

THENCE, S. 07°25' E., 802.56 feet;

THENCE, S. 00°42' E., 526.02 feet;

THENCE, S. 02°41' W., 644.82 feet;

THENCE, S. 06°18' W., 670.56 feet to the angle point of sections 13 and 24, at the digitized 2003 left bank ordinary high-water mark;

THENCE, S. 89°43' E., along the line between sections 13 and 24, 615.78 feet to the 1897 meander corner of sections 13 and 24;

THENCE, S. 83°46' E., along the line between sections 13 and 24, 112.20 feet to the corner of sections 13, 18, 19 and 24;

THENCE, N. 00°08' E., along the line between sections 13 and 18, 5285.28 feet to the corner of sections 7, 12, 13 and 18;

THENCE, N. 88°51' W., along the line between sections 12 and 13, 664.62 feet to the 1897 meander corner of sections 12 and 13;

THENCE, N. 89°43' W., along the line between sections 12 and 13, 148.50 feet to the **POINT OF BEGINNING**, containing +/- 89.93 acres.

BASIS OF BEARINGS: As shown on the official BLM plat, approved October 2, 2008, referenced to the true meridian.

Meaning and intending to describe the parcel derived from the Official Bureau of Land Management plats and field notes of the Dependent Resurvey and Survey of the Arkansas River Bed approved October 2, 2008. The purpose of this description is to describe the wet bed areas as shown on the plat. This is exclusively for use by the Arkansas Riverbed Authority and the Choctaw, Chickasaw and Cherokee Nations of Oklahoma. Accuracy and acreages defined by the original survey documentation.

Note: See Exhibit "A" enlargement of the official Bureau of Land Management Plat attached.

David L. Page, Jr. (8/28/20)
LS #1566

David L. Page Jr.
DAVID L. PAGE, JR. P.L.S. #1566
8-28-20
DATE SIGNED

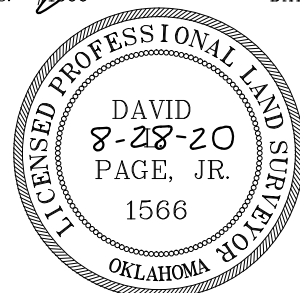


EXHIBIT "A"

~BASIS OF BEARING~
As shown on the official BLM plat, approved
October 2, 2008, referenced to the true meridian.

LEGAL DESCRIPTION EXHIBIT

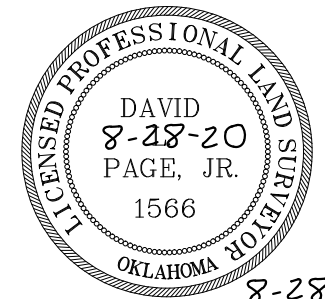
SECTION 24, TOWNSHIP 10 NORTH, RANGE 26 EAST
LEFLORE AND SEQUOYAH COUNTY, STATE OF OKLAHOMA.



124 SOUTH 8th AVENUE
DURANT, OKLAHOMA 74701
(580) 920-9101 OR (580) 239-0176
FAX (580) 920-9121

DAVID L. PAGE JR. © 2020
PROFESSIONAL LAND SURVEYOR #1566
C.A. # 1991, EXPIRES 6-30-2021

Surveyor's Seal



8-28-20

DATE SIGNED

David L. Page
DAVID L. PAGE, JR. P.L.S. #1566

LOCATION
SECTION 24
TOWNSHIP 10 NORTH, RANGE 26 EAST
LEFLORE AND SEQUOYAH COUNTY

GENERAL NOTES

SUBJECT TO EASEMENTS AND/OR RIGHTS-OF-WAY, EITHER RECORDED, OR IMPLIED, THEREOF.
NO UTILITIES OF ANY KIND HAVE BEEN LOCATED EXCEPT THOSE SHOWN ON THE ABOVE PLAT
CONTROLLING CORNERS FOR THIS LEGAL DESCRIPTION ARE AS INDICATED ON THE LOCATION MAP
THIS IS NOT A VALID LEGAL DESCRIPTION WITHOUT THE SURVEYORS ORIGINAL SIGNATURE AND ORIGINAL SEAL
PORTIONS OF THIS PLAT ARE IN COLOR, PHOTO AND ELECTRONIC COPIES OF THIS PLAT MAKE IT INVALID AND MAY ALTER ITS MEANING
THIS EXHIBIT AND LEGAL DESCRIPTION MEETS THE OKLAHOMA MINIMUM STANDARDS FOR THE PRACTICE OF LAND SURVEYING AS ADOPTED BY THE OKLAHOMA STATE BOARD OF LICENSURE FOR PROFESSIONAL ENGINEERS AND LAND SURVEYORS.

NO.	REVISION/ISSUE	DATE

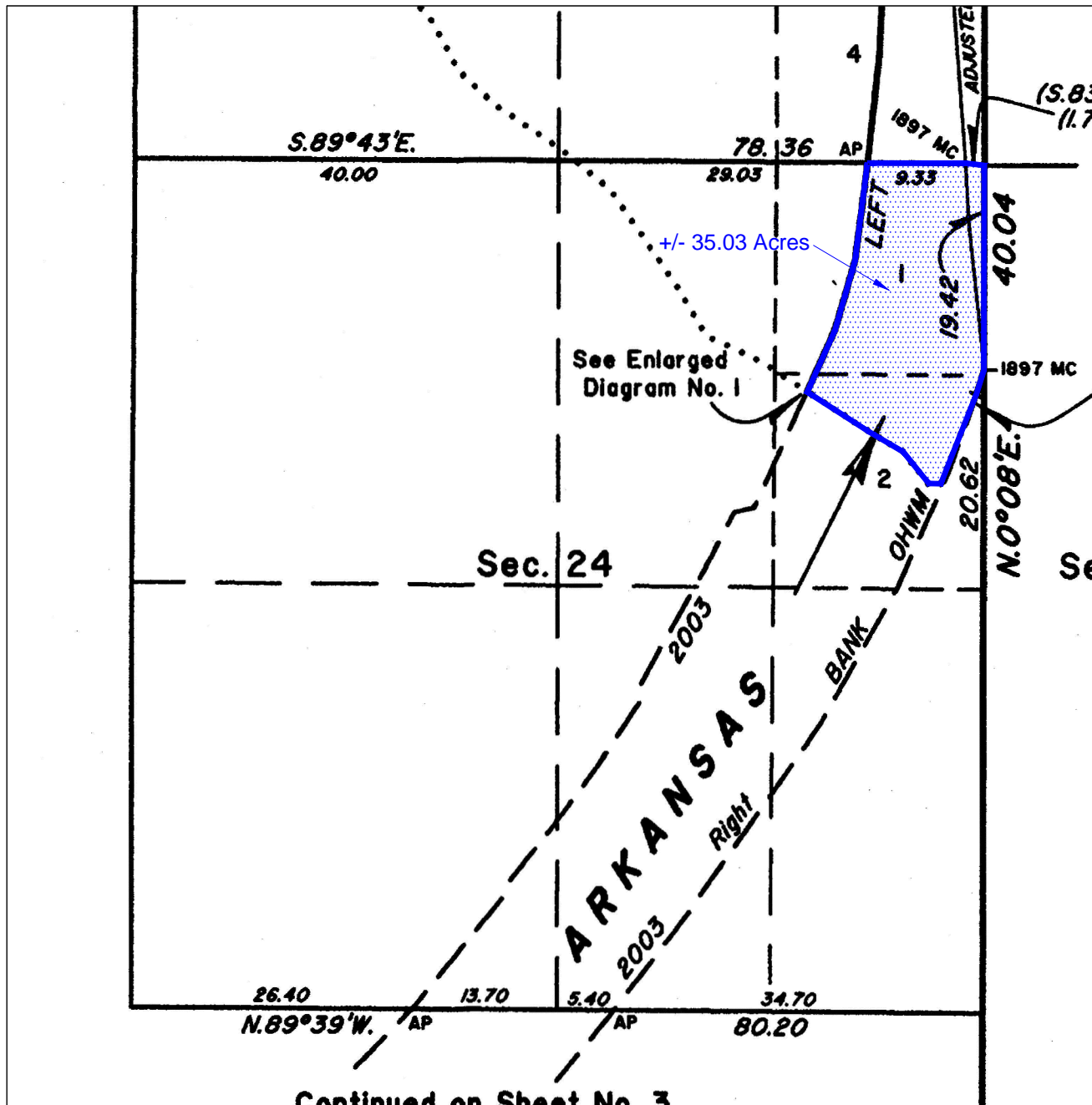
SURVEY INFORMATION	
FIELD WORK PERFORMED:	NONE
DATE OF LAST SITE VISIT:	NONE
EXHIBIT COMPLETED:	8-28-20

Project Name and Address
ARKANSAS RIVER EXHIBIT
SECTION 24, TOWNSHIP 10 NORTH, RANGE 26 EAST
LEFLORE AND SEQUOYAH COUNTY, STATE OF OKLAHOMA.

SCALE 1" = 1000'

SHEET NO. 1 OF 1

DATE 8-28-20



LEGAL DESCRIPTION:

A parcel of land situated in section 24 of township 10 north, range 26 east, Indian Meridian, LeFlore and Sequoyah County, Oklahoma, being the wet bed acres of section 24, and being more particularly described as follows:

BEGINNING at the angle point of sections 13 and 24, at the digitized 2003 left bank ordinary high-water mark, upstream along said mark in section 24;

THENCE, upstream along aforesaid mark, S. 07°20' W., 618.42 feet;

THENCE, S. 16°07' W., 451.44 feet;

THENCE, S. 24°19' W., 417.78 feet to the boundary of the historic river bed;

THENCE, S. 57°07' E., along the boundary of the historic river bed, 452.76 feet;

THENCE, S. 59°27' E., along the boundary of the historic river bed, 254.10 feet;

THENCE, S. 38°45' E., along the boundary of the historic river bed, 252.78 feet;

THENCE, S. 89°53' E., along the boundary of the historic river bed, 75.24 feet;

THENCE, N. 21°41' E., along the boundary of the historic river bed, 597.30 feet to the digitized 2003 right bank ordinary high-water mark, downstream along said mark in section 24;

THENCE, downstream along aforesaid mark, N. 17°54' E., 155.76 feet to the 1897 meander corner of sections 19 and 24;

THENCE, N. 00°08' E., along the line between sections 19 and 24, 1281.72 feet to the corner of sections 13, 18, 19 and 24;

THENCE, N. 83°46' W., along the line between sections 13 and 24, 112.20 feet to the 1897 meander corner of sections 13 and 24;

THENCE, N. 89°43' W., along the line between sections 13 and 24, 615.78 feet to the **POINT OF BEGINNING**, containing +/- 35.03 acres.

BASIS OF BEARINGS: As shown on the official BLM plat, approved October 2, 2008, referenced to the true meridian.

Meaning and intending to describe the parcel derived from the Official Bureau of Land Management plats and field notes of the Dependent Resurvey and Survey of the Arkansas River Bed approved October 2, 2008. The purpose of this description is to describe the wet bed areas as shown on the plat. This is exclusively for use by the Arkansas Riverbed Authority and the Choctaw, Chickasaw and Cherokee Nations of Oklahoma. Accuracy and acreages defined by the original survey documentation.

Note: See Exhibit "A" enlargement of the official Bureau of Land Management Plat attached.

David L. Page, Jr. (8/28/20)
LS #1566

SURVEYOR'S SPECIAL NOTE:

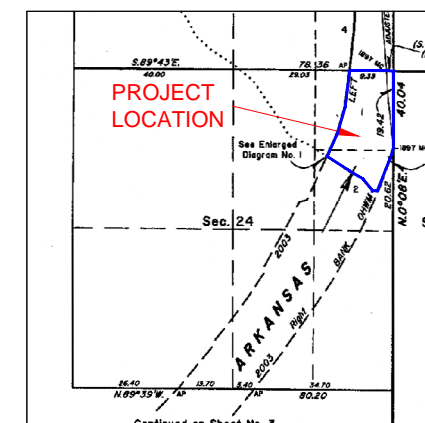
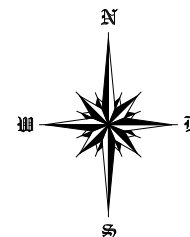
1. MEANING AND INTENDING TO DESCRIBE THE PARCEL DERIVED FROM THE OFFICIAL BUREAU OF LAND MANAGEMENT PLATS AND FIELDNOTES OF THE DEPENDENT RESURVEY AND SURVEY OF THE ARKANSAS RIVER BED APPROVED OCTOBER 2, 2008. THE PURPOSE OF THIS DESCRIPTION IS TO DESCRIBE THE WET BED AREAS AS SHOWN ON THE PLAT. THIS IS EXCLUSIVELY FOR USE BY THE ARKANSAS RIVERBED AUTHORITY AND THE CHOCTAW, CHICKASAW AND CHEROKEE NATIONS OF OKLAHOMA. ACCURACY AND ACREAGES DEFINED BY THE ORIGINAL SURVEY DOCUMENTATION.

2. THIS IS NOT A BOUNDARY SURVEY AND IS NOT INTENDED TO BE USED AS A BOUNDARY SURVEY. NO FIELD WORK HAS BEEN DONE AND NO MONUMENTS HAVE BEEN VERIFIED.

LEGEND

These standard symbols may be found in the drawing.

- CALCULATED AREA LIMITS
- ▲ CALCULATED CORNER (NOTHING SET)



LOCATION MAP

LEGAL DESCRIPTION:

A parcel of land situated in section 24 of township 10 north, range 26 east, Indian Meridian, LeFlore and Sequoyah County, Oklahoma, being the wet bed acres of section 24, and being more particularly described as follows:

BEGINNING at the angle point of sections 13 and 24, at the digitized 2003 left bank ordinary high-water mark, upstream along said mark in section 24;

THENCE, upstream along aforesaid mark, S. 07°20' W., 618.42 feet;

THENCE, S. 16°07' W., 451.44 feet;

THENCE, S. 24°19' W., 417.78 feet to the boundary of the historic river bed;

THENCE, S. 57°07' E., along the boundary of the historic river bed, 452.76 feet;

THENCE, S. 59°27' E., along the boundary of the historic river bed, 254.10 feet;

THENCE, S. 38°45' E., along the boundary of the historic river bed, 252.78 feet;

THENCE, S. 89°53' E., along the boundary of the historic river bed, 75.24 feet;

THENCE, N. 21°41' E., along the boundary of the historic river bed, 597.30 feet to the digitized 2003 right bank ordinary high-water mark, downstream along said mark in section 24;

THENCE, downstream along aforesaid mark, N. 17°54' E., 155.76 feet to the 1897 meander corner of sections 19 and 24;

THENCE, N. 00°08' E., along the line between sections 19 and 24 ,1281.72 feet to the corner of sections 13, 18, 19 and 24;

THENCE, N. 83°46' W., along the line between sections 13 and 24, 112.20 feet to the 1897 meander corner of sections 13 and 24;

THENCE, N. 89°43' W., along the line between sections 13 and 24, 615.78 feet to the **POINT OF BEGINNING**, containing +/- 35.03 acres.

BASIS OF BEARINGS: As shown on the official BLM plat, approved October 2, 2008, referenced to the true meridian.

Meaning and intending to describe the parcel derived from the Official Bureau of Land Management plats and field notes of the Dependent Resurvey and Survey of the Arkansas River Bed approved October 2, 2008. The purpose of this description is to describe the wet bed areas as shown on the plat. This is exclusively for use by the Arkansas Riverbed Authority and the Choctaw, Chickasaw and Cherokee Nations of Oklahoma. Accuracy and acreages defined by the original survey documentation.

Note: See Exhibit "A" enlargement of the official Bureau of Land Management Plat attached.

David L. Page, Jr. (8/28/20)
LS #1566

David L. Page Jr.
DAVID L. PAGE, JR. P.L.S. #1566
8-28-20
DATE SIGNED

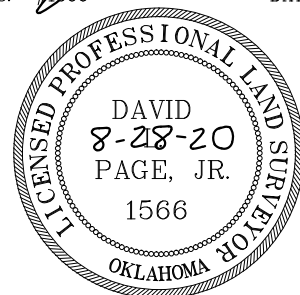
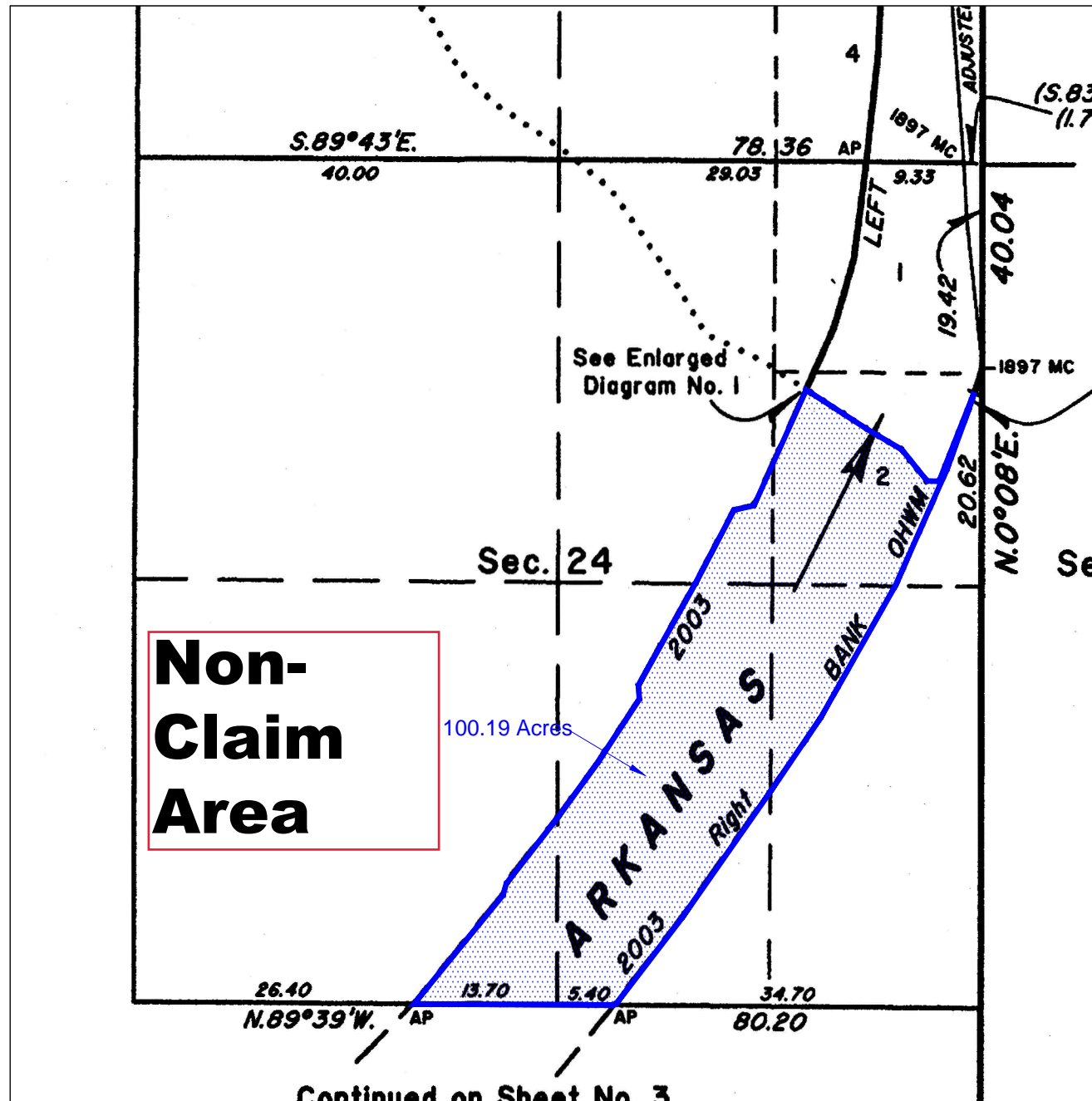


EXHIBIT "A"

~BASIS OF BEARING~
As shown on the official BLM plat, approved
October 2, 2008, referenced to the true meridian.

LEGAL DESCRIPTION EXHIBIT

SECTION 24, TOWNSHIP 10 NORTH, RANGE 26 EAST
LEFLORE AND SEQUOYAH COUNTY, STATE OF OKLAHOMA.



LEGAL DESCRIPTION:

A parcel of land situated in section 24 of township 10 north, range 26 east, Indian Meridian, LeFlore and Sequoyah County, Oklahoma, being the **non-claim wet bed acres of section 24**, and being more particularly described as follows:

- BEGINNING** at the angle point of sections 24 and 25, at the digitized 2003 right bank ordinary high-water mark, downstream along said mark in section 24;
- THENCE**, downstream along aforesaid mark, N. 37°29' E., 682.44 feet;
- THENCE**, N. 34°58' E., 981.42 feet;
- THENCE**, N. 34°17' E., 551.76 feet;
- THENCE**, N. 29°30' E., 952.38 feet;
- THENCE**, N. 23°53' E., 794.64 feet;
- THENCE**, N. 20°07' E., 405.24 feet;
- THENCE**, N. 17°54' E., 107.58 feet to the boundary of the historic river bed;
- THENCE**, S. 21°41' W., along the boundary of the historic river bed, 597.30 feet;
- THENCE**, N. 89°53' W., along the boundary of the historic river bed, 75.24 feet;
- THENCE**, N. 38°45' W., along the boundary of the historic river bed, 252.78 feet;
- THENCE**, N. 59°27' W., along the boundary of the historic river bed, 254.10 feet;
- THENCE**, N. 57°07' W., along the boundary of the historic river bed, 452.76 feet to the digitized 2003 left bank ordinary high-water mark, upstream along said mark in section 24;
- THENCE**, upstream along aforesaid mark, S. 24°19' W., 2.64 feet;
- THENCE**, S. 24°19' W., 793.32 feet;
- THENCE**, S. 77°48' W., 128.04 feet;
- THENCE**, S. 27°38' W., 522.72 feet;
- THENCE**, S. 29°18' W., 728.64 feet;
- THENCE**, S. 04°09' E., 88.44 feet;
- THENCE**, S. 33°21' W., 478.50 feet;
- THENCE**, S. 36°02' W., 419.10 feet;
- THENCE**, S. 37°55' W., 527.34 feet;
- THENCE**, S. 16°47' W., 77.22 feet;
- THENCE**, S. 39°14' W., 881.40 feet to the angle point of sections 24 and 25;
- THENCE**, S. 89°39' E., along the line between sections 24 and 25, 1260.60 feet to the **POINT OF BEGINNING**, containing +/- 100.09 acres.

BASIS OF BEARINGS: As shown on the official BLM plat, approved October 2, 2008, referenced to the true meridian.

Meaning and intending to describe the parcel derived from the Official Bureau of Land Management plats and field notes of the Dependent Resurvey and Survey of the Arkansas River Bed approved October 2, 2008. The purpose of this description is to describe the wet bed areas as shown on the plat. This is exclusively for use by the Arkansas Riverbed Authority and the Choctaw, Chickasaw and Cherokee Nations of Oklahoma. Accuracy and acreages defined by the original survey documentation.

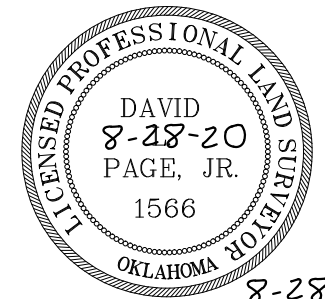
Note: See Exhibit "A" enlargement of the official Bureau of Land Management Plat attached.



124 SOUTH 8th AVENUE
DURANT, OKLAHOMA 74701
(580) 920-9101 OR (580) 239-0176
FAX (580) 920-9121

DAVID L. PAGE JR. © 2020
PROFESSIONAL LAND SURVEYOR #1566
C.A. # 1991, EXPIRES 6-30-2021

Surveyor's Seal



8-28-20
DATE SIGNED

David L. Page
DAVID L. PAGE, JR. P.L.S. #1566

LOCATION
SECTION 24
TOWNSHIP 10 NORTH, RANGE 26 EAST
LEFLORE AND SEQUOYAH COUNTY

GENERAL NOTES

SUBJECT TO EASEMENTS AND/OR RIGHTS-OF-WAY, EITHER RECORDED, OR IMPLIED, THEREOF.

NO UTILITIES OF ANY KIND HAVE BEEN LOCATED EXCEPT THOSE SHOWN ON THE ABOVE PLAT

CONTROLLING CORNERS FOR THIS LEGAL DESCRIPTION ARE AS INDICATED ON THE LOCATION MAP

THIS IS NOT A VALID LEGAL DESCRIPTION WITHOUT THE SURVEYORS ORIGINAL SIGNATURE AND ORIGINAL SEAL

PORTIONS OF THIS PLAT ARE IN COLOR. PHOTO AND ELECTRONIC COPIES OF THIS PLAT MAKE IT INVALID AND MAY ALTER ITS MEANING

THIS EXHIBIT AND LEGAL DESCRIPTION MEETS THE OKLAHOMA MINIMUM STANDARDS FOR THE PRACTICE OF LAND SURVEYING AS ADOPTED BY THE OKLAHOMA STATE BOARD OF LICENSURE FOR PROFESSIONAL ENGINEERS AND LAND SURVEYORS.

NO.	REVISION/ISSUE	DATE

SURVEY INFORMATION	
FIELD WORK PERFORMED:	NONE
DATE OF LAST SITE VISIT:	NONE
EXHIBIT COMPLETED:	8-28-20

Project Name and Address
ARKANSAS RIVER EXHIBIT
SECTION 24, TOWNSHIP 10 NORTH, RANGE 26 EAST
LEFLORE AND SEQUOYAH COUNTY, STATE OF OKLAHOMA.

SCALE 1" = 1000'

SHEET NO. 1 OF 1

DATE 8-28-20

SURVEYOR'S SPECIAL NOTE:

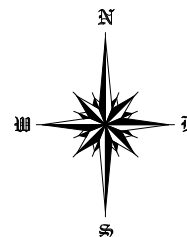
1. MEANING AND INTENDING TO DESCRIBE THE PARCEL DERIVED FROM THE OFFICIAL BUREAU OF LAND MANAGEMENT PLATS AND FIELDNOTES OF THE DEPENDENT RESURVEY AND SURVEY OF THE ARKANSAS RIVER BED APPROVED OCTOBER 2, 2008. THE PURPOSE OF THIS DESCRIPTION IS TO DESCRIBE THE WET BED AREAS AS SHOWN ON THE PLAT. THIS IS EXCLUSIVELY FOR USE BY THE ARKANSAS RIVERBED AUTHORITY AND THE CHOCTAW, CHICKASAW AND CHEROKEE NATIONS OF OKLAHOMA. ACCURACY AND ACREAGES DEFINED BY THE ORIGINAL SURVEY DOCUMENTATION.

2. THIS IS NOT A BOUNDARY SURVEY AND IS NOT INTENDED TO BE USED AS A BOUNDARY SURVEY. NO FIELD WORK HAS BEEN DONE AND NO MONUMENTS HAVE BEEN VERIFIED.

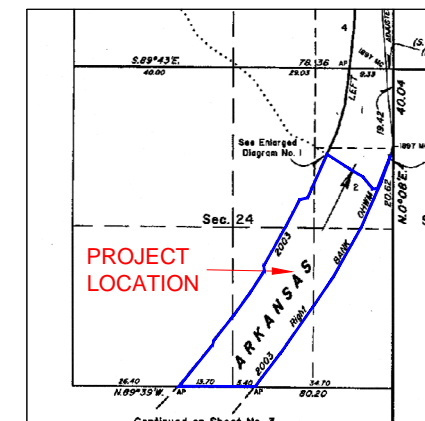
LEGEND

These standard symbols may be found in the drawing.

- CALCULATED AREA LIMITS
- ▲ CALCULATED CORNER (NOTHING SET)



David L. Page, Jr. (8/28/20)
LS #1566



LOCATION MAP

LEGAL DESCRIPTION:

A parcel of land situated in section 24 of township 10 north, range 26 east, Indian Meridian, LeFlore and Sequoyah County, Oklahoma, being the non-claim wet bed acres of section 24, and being more particularly described as follows:

BEGINNING at the angle point of sections 24 and 25, at the digitized 2003 right bank ordinary high-water mark, downstream along said mark in section 24;

THENCE, downstream along aforesaid mark, N. 37°29' E., 682.44 feet;

THENCE, N. 34°58' E., 981.42 feet;

THENCE, N. 34°17' E., 551.76 feet;

THENCE, N. 29°30' E., 952.38 feet;

THENCE, N. 23°53' E., 794.64 feet;

THENCE, N. 20°07' E., 405.24 feet;

THENCE, N. 17°54' E., 107.58 feet to the boundary of the historic river bed;

THENCE, S. 21°41' W., along the boundary of the historic river bed, 597.30 feet;

THENCE, N. 89°53' W., along the boundary of the historic river bed, 75.24 feet;

THENCE, N. 38°45' W., along the boundary of the historic river bed, 252.78 feet;

THENCE, N. 59°27' W., along the boundary of the historic river bed, 254.10 feet;

THENCE, N. 57°07' W., along the boundary of the historic river bed, 452.76 feet to the digitized 2003 left bank ordinary high-water mark, upstream along said mark in section 24;

THENCE, upstream along aforesaid mark, S. 24°19' W., 2.64 feet;

THENCE, S. 24°19' W., 793.32 feet;

THENCE, S. 77°48' W., 128.04 feet;

THENCE, S. 27°38' W., 522.72 feet;

THENCE, S. 29°18' W., 728.64 feet;

THENCE, S. 04°09' E., 88.44 feet;

THENCE, S. 33°21' W., 478.50 feet;

THENCE, S. 36°02' W., 419.10 feet;

THENCE, S. 37°55' W., 527.34 feet;

THENCE, S. 16°47' W., 77.22 feet;

THENCE, S. 39°14' W., 881.40 feet to the angle point of sections 24 and 25;

THENCE, S. 89°39' E., along the line between sections 24 and 25, 1260.60 feet to the **POINT OF BEGINNING**, containing +/- 100.09 acres.

BASIS OF BEARINGS: As shown on the official BLM plat, approved October 2, 2008, referenced to the true meridian.

Meaning and intending to describe the parcel derived from the Official Bureau of Land Management plats and field notes of the Dependent Resurvey and Survey of the Arkansas River Bed approved October 2, 2008. The purpose of this description is to describe the wet bed areas as shown on the plat. This is exclusively for use by the Arkansas Riverbed Authority and the Choctaw, Chickasaw and Cherokee Nations of Oklahoma. Accuracy and acreages defined by the original survey documentation.

Note: See Exhibit "A" enlargement of the official Bureau of Land Management Plat attached.

David L. Page, Jr. (8/28/20)
LS #1566

David L. Page, Jr.
DAVID L. PAGE, JR. P.L.S. #1566

8-28-20
DATE SIGNED

